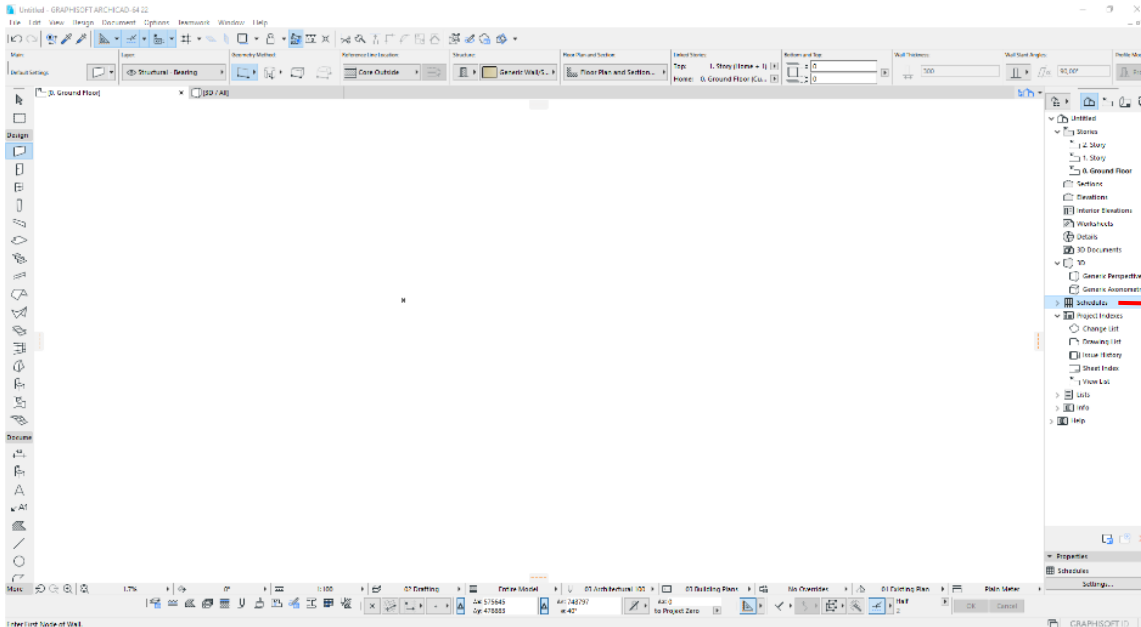


Making schedules with Graphisoft ArchiCad v22

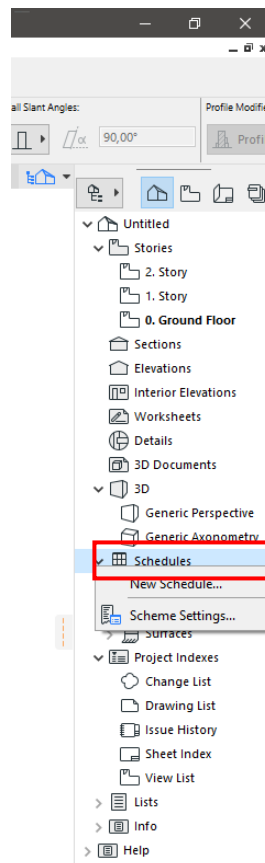
We can make some schedules with the quantity of all of the model elements in the ArchiCad.

We can use it for the Schedules panel:

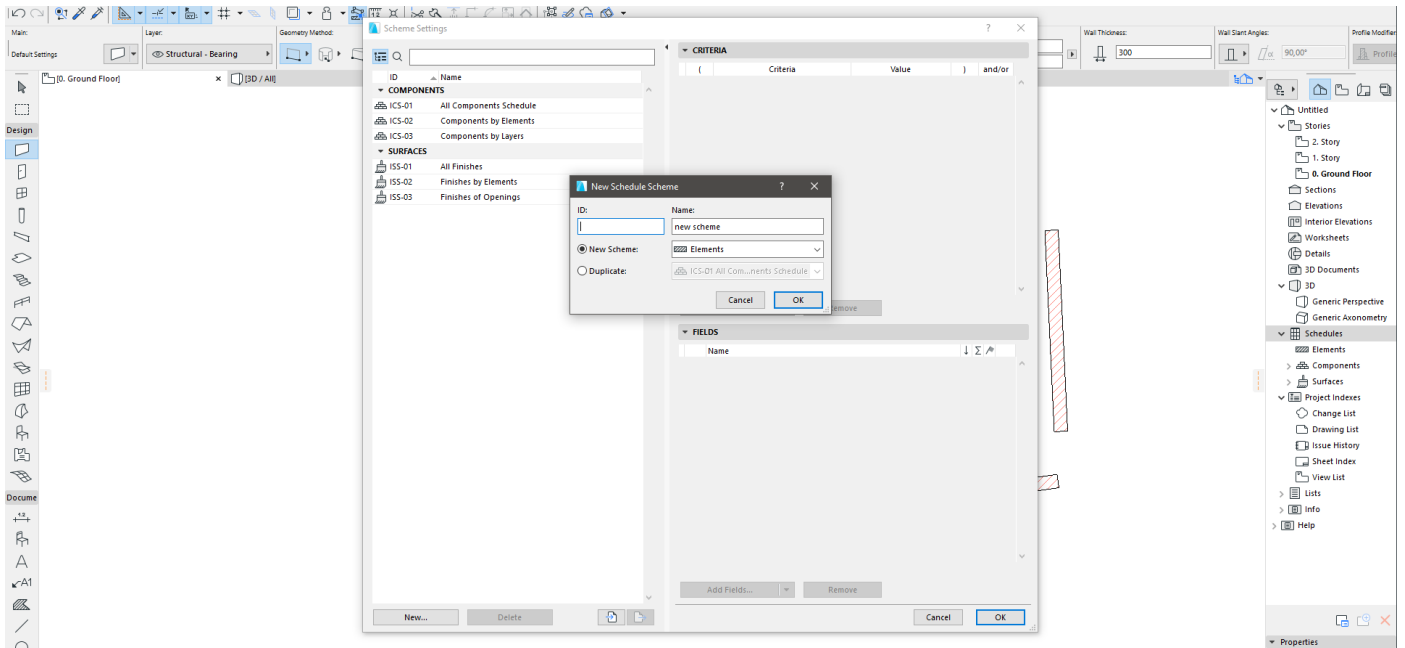


After that you can click on the „**Schedules**” with right click.

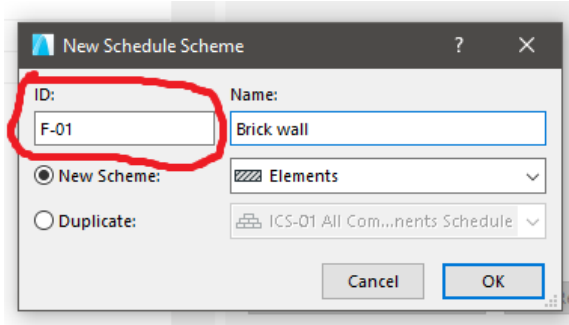
You will see the following box and click on the „**New Schedule...**”



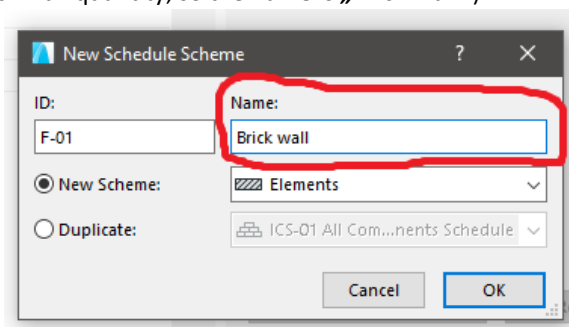
After that you will see the following window:



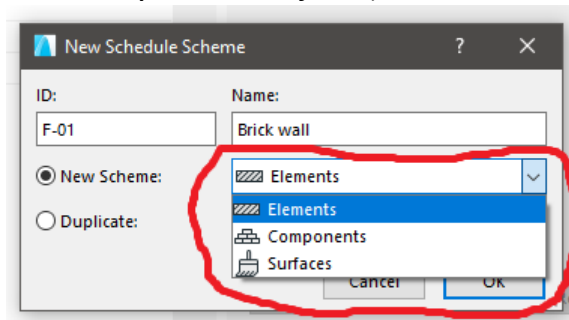
Here you can add the „ID:” of the new schedule, which you can choose any number or letter.



After that you can add the „Name:” of the schedule – write the name of the element what you want to define (in this sample task I want to make a list with the brick wall quantity, so the name is „**Brick wall**”)



Here you can choose 3 options („Elements”; „Components”; „Surfaces”)



When we can use the „*Elements*”, „*Components*”, „*Surfaces*”?

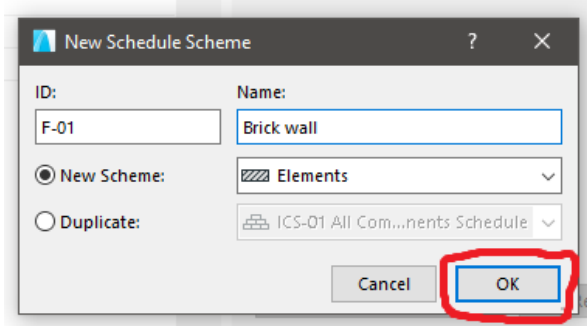
For example:

- „*Elements*”:
We can determine the area/quantity of the following elements:
 - windows and doors [pcs]
 - prefabricated elements [pcs]

- „*Components*”:
We can determine the volume of the following components:
 - masonry / brick wall [m2]
 - heating insulation [m2]
 - reinforced concrete [m3]
 - concrete [m3]
 - earth work / soil [m3]
 - timber structures [m]
 - metallic works, reinforcement steel [ton]

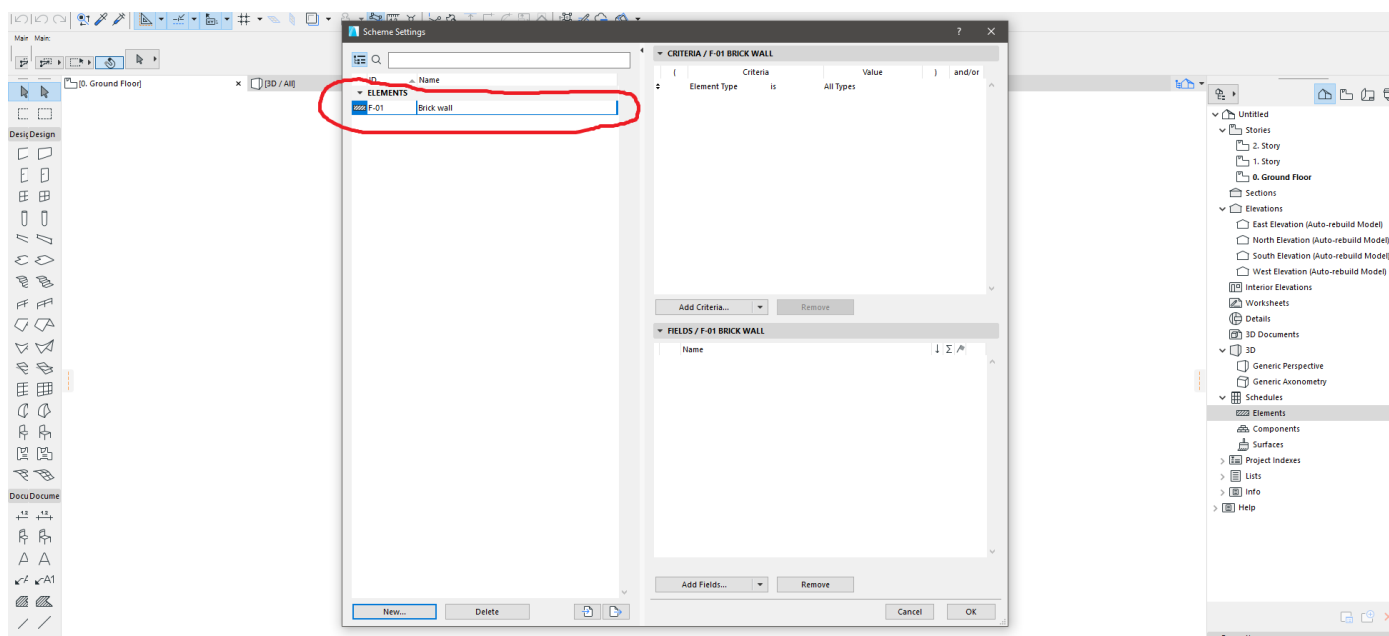
- „*Surfaces*”:
We can determine the surface area of the following elements:
 - plastering of the wall [m2]
 - painting [m2]
 - floor tiling [m2]

First of all in this example we determine the area of the wall, so we choose the „*Elements*” option:



After that you will see this window:

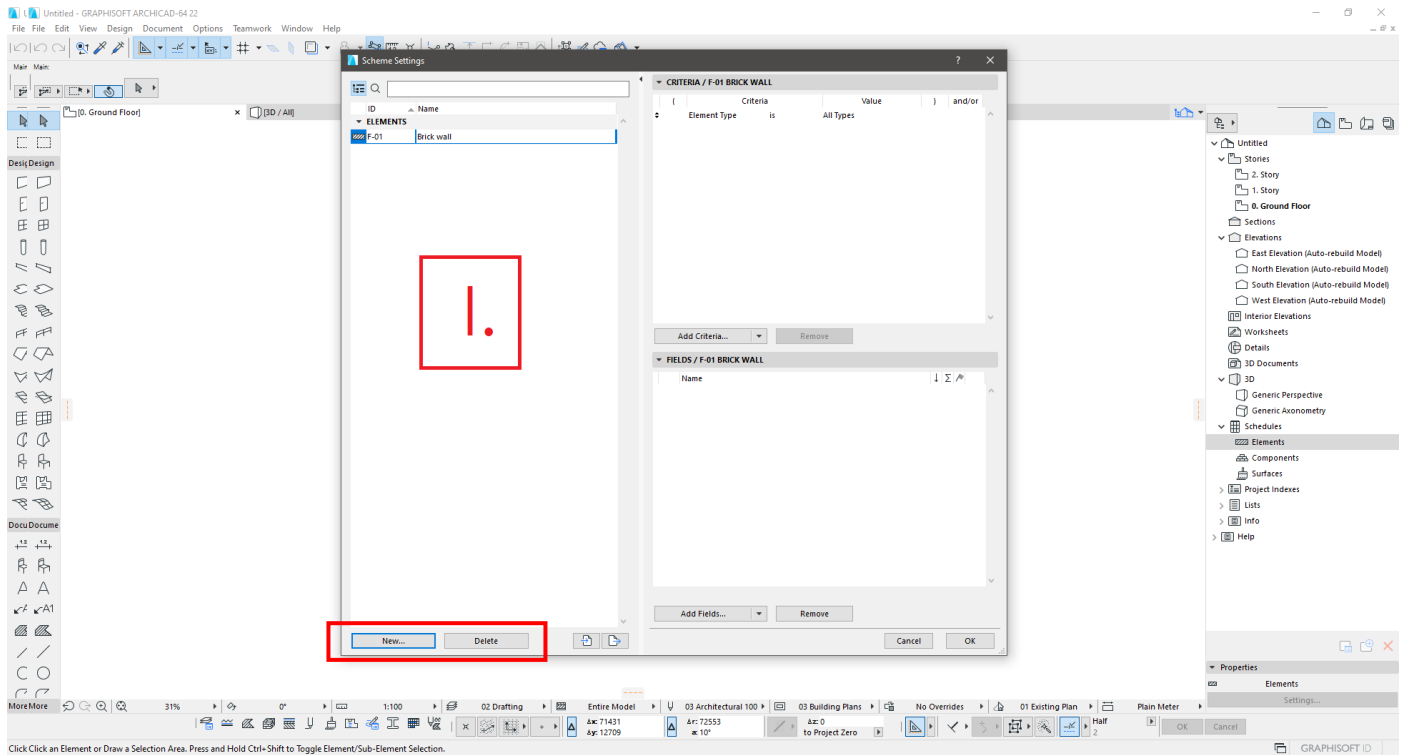
You can see it under the „*Elements*” (If we make „*Components*” and „*Surfaces*” you can see in the list).



There are 3 main parts of this window:

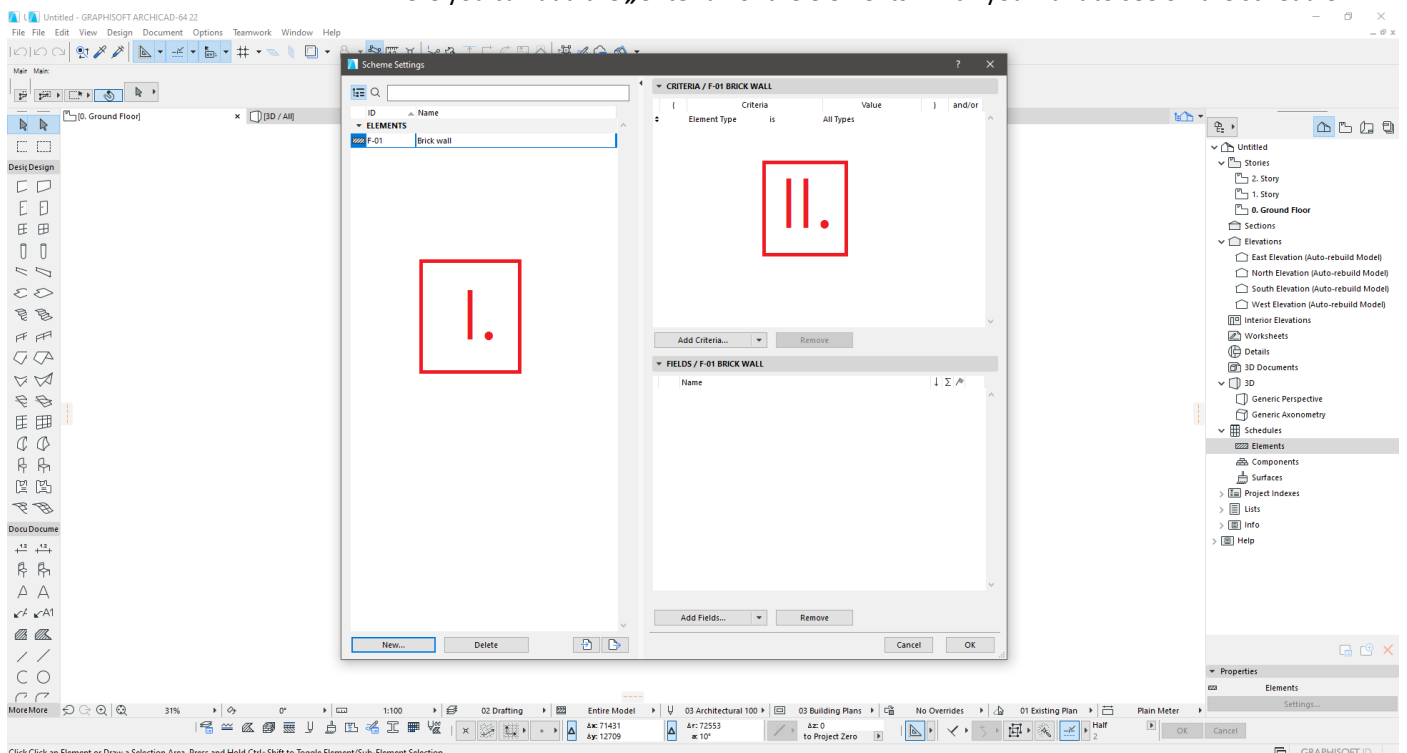
I. The left side –

- here you can see the „*Schedules*” name
- you can change the name of the schedules – 1. click the name of the schedule; 2. type the new name of the schedule
- you can make new schedules here – 1. click the „*New*”; 2. you can make „*New*” schedules (like the previous steps)
- you can „*Delete*” schedules

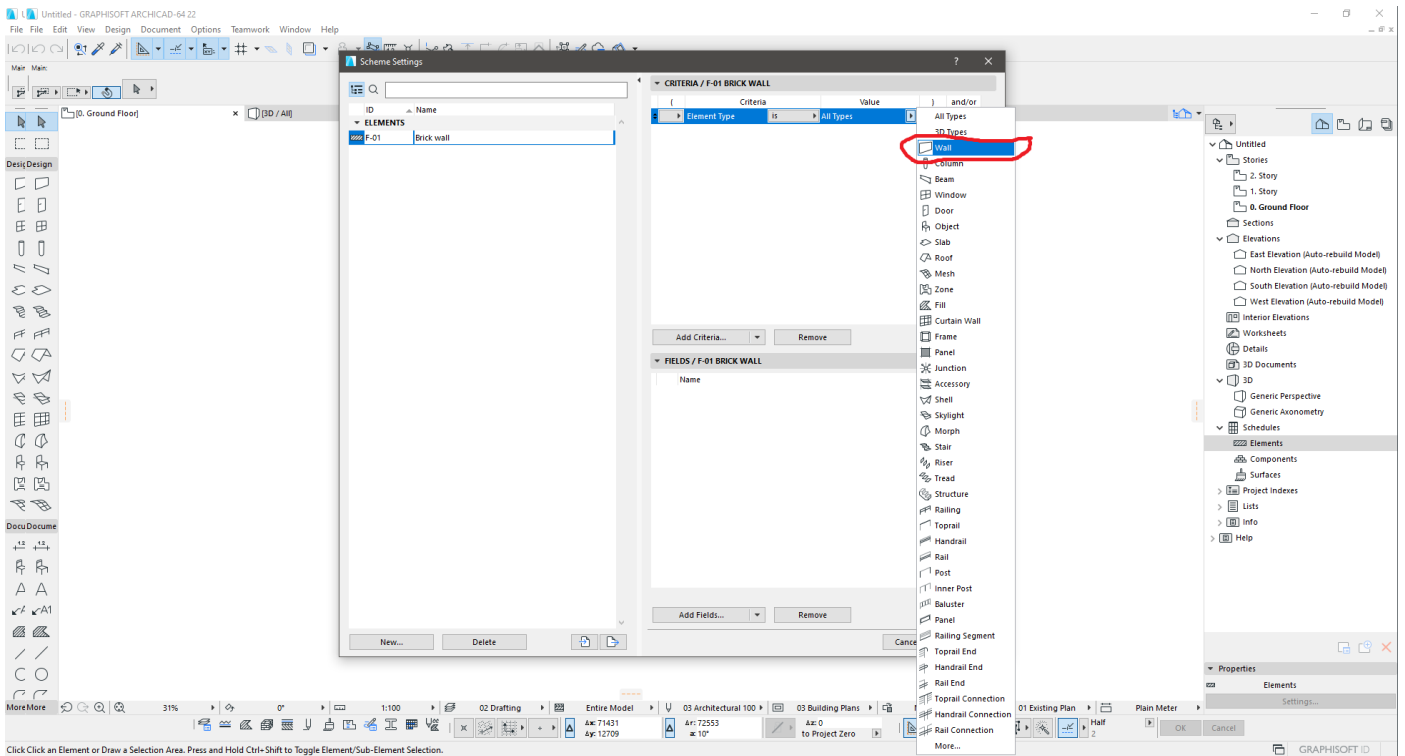
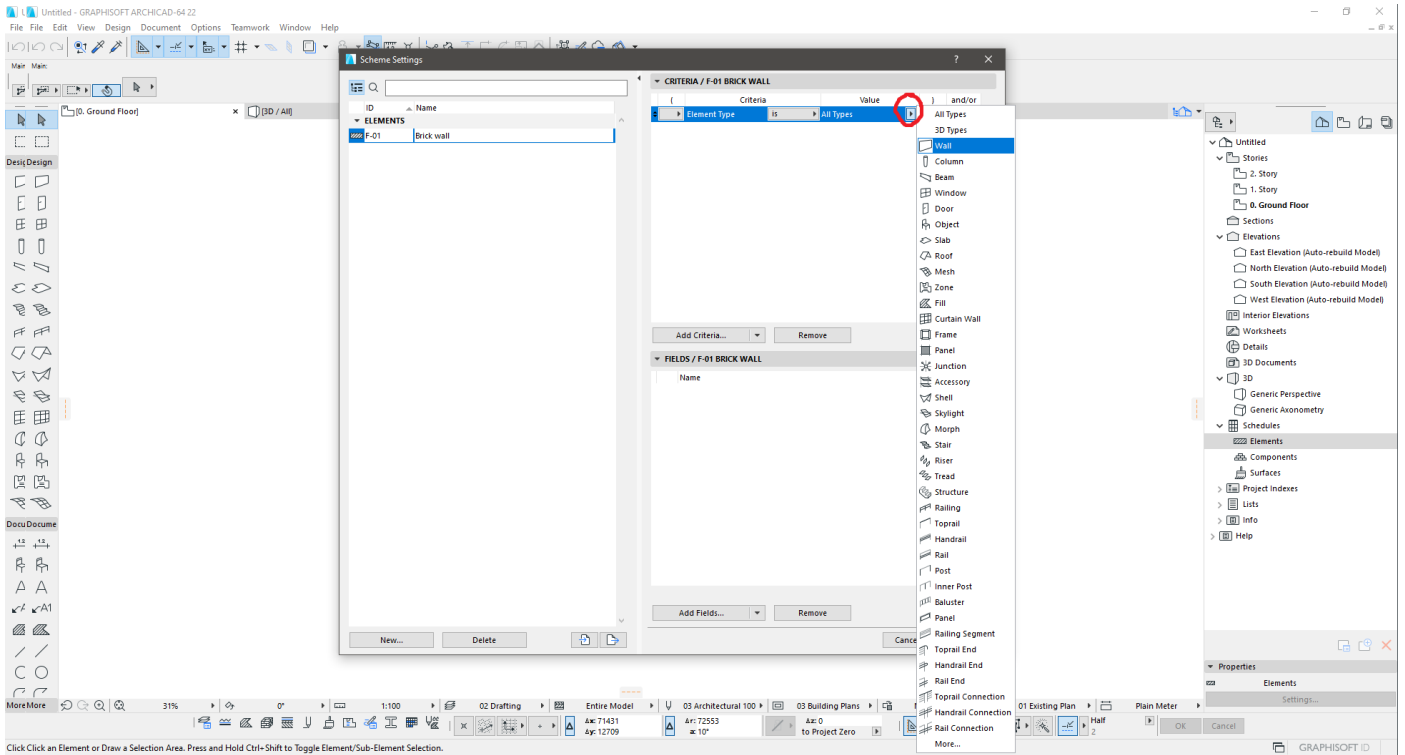


II. The top of the right side –

- here you can add the „*Criteria*” of the elements which you want to see on the schedule

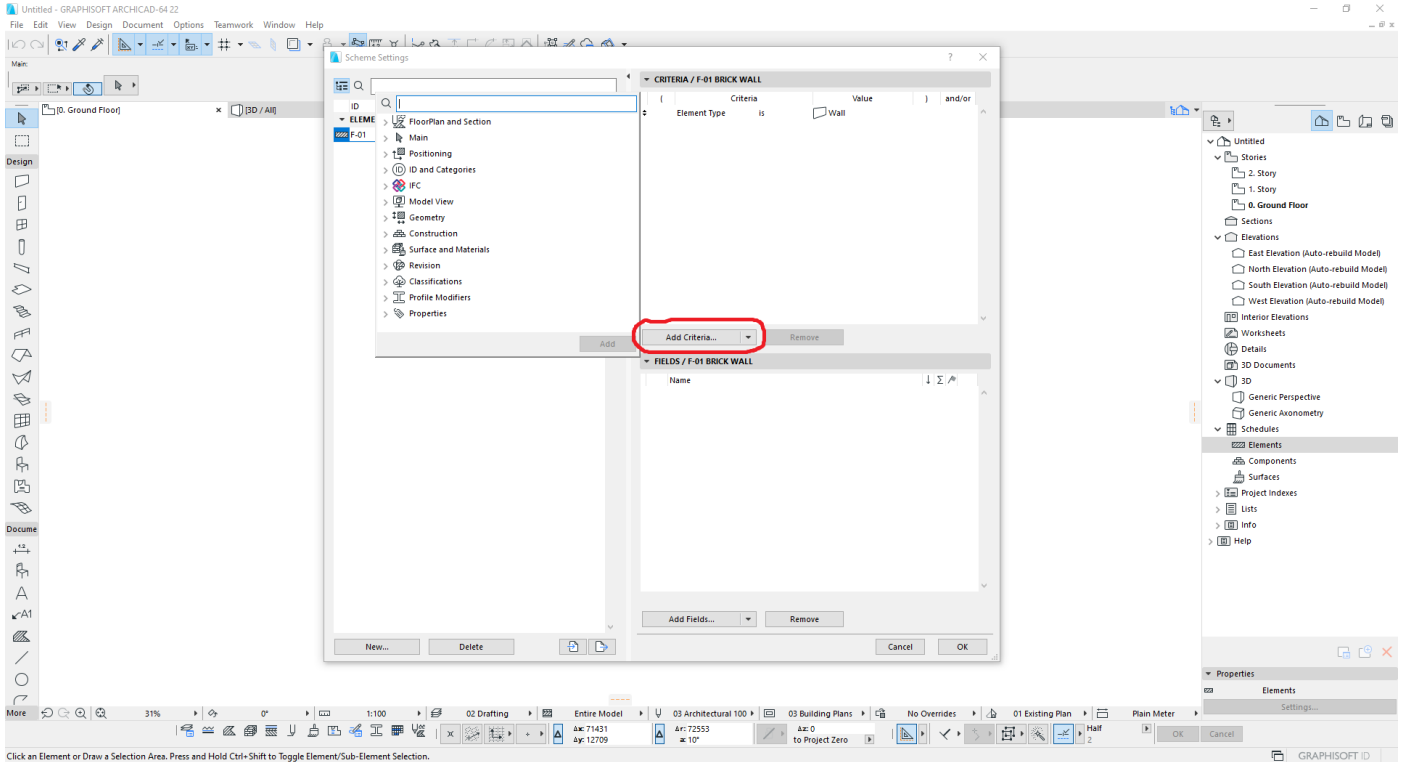


- The next step is click on the „Wall” under the „Value” option:

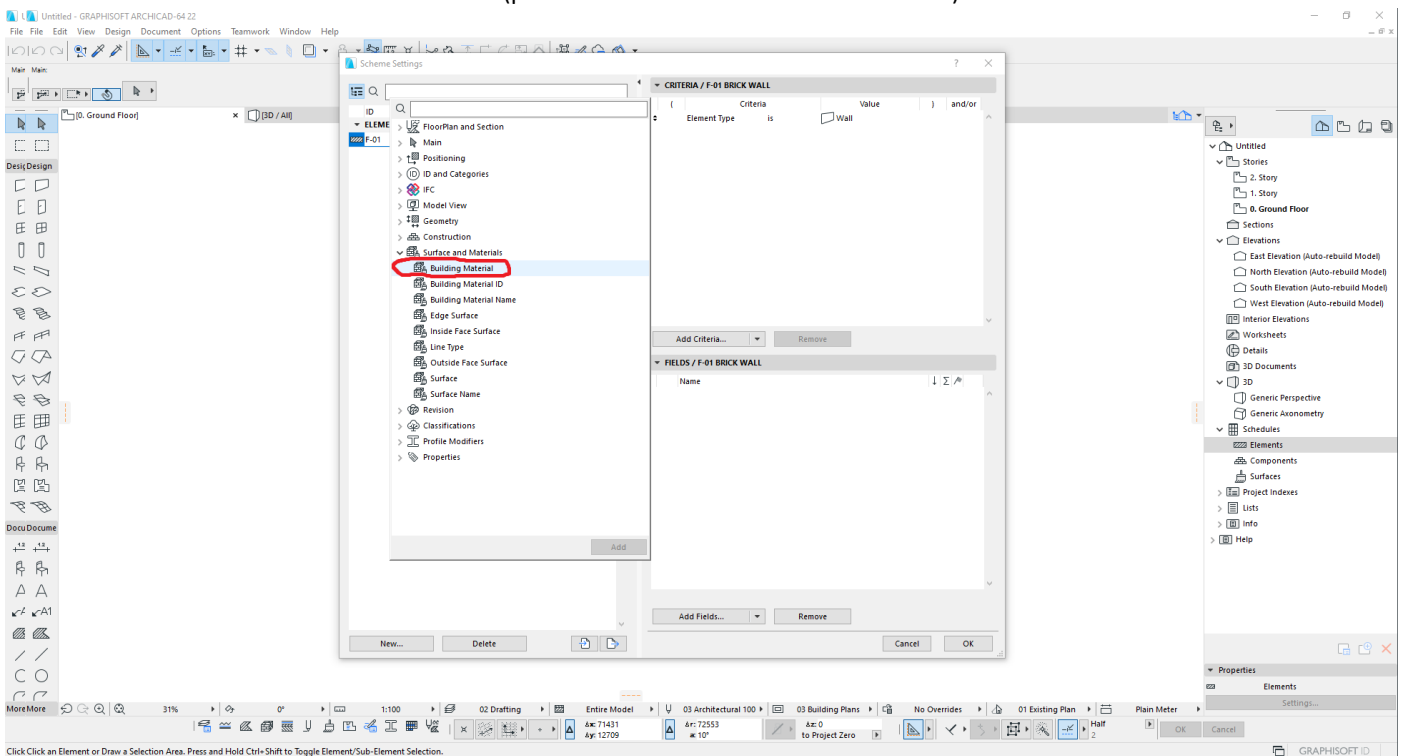


- (Here you can choose every other elements what about you want to make a list)

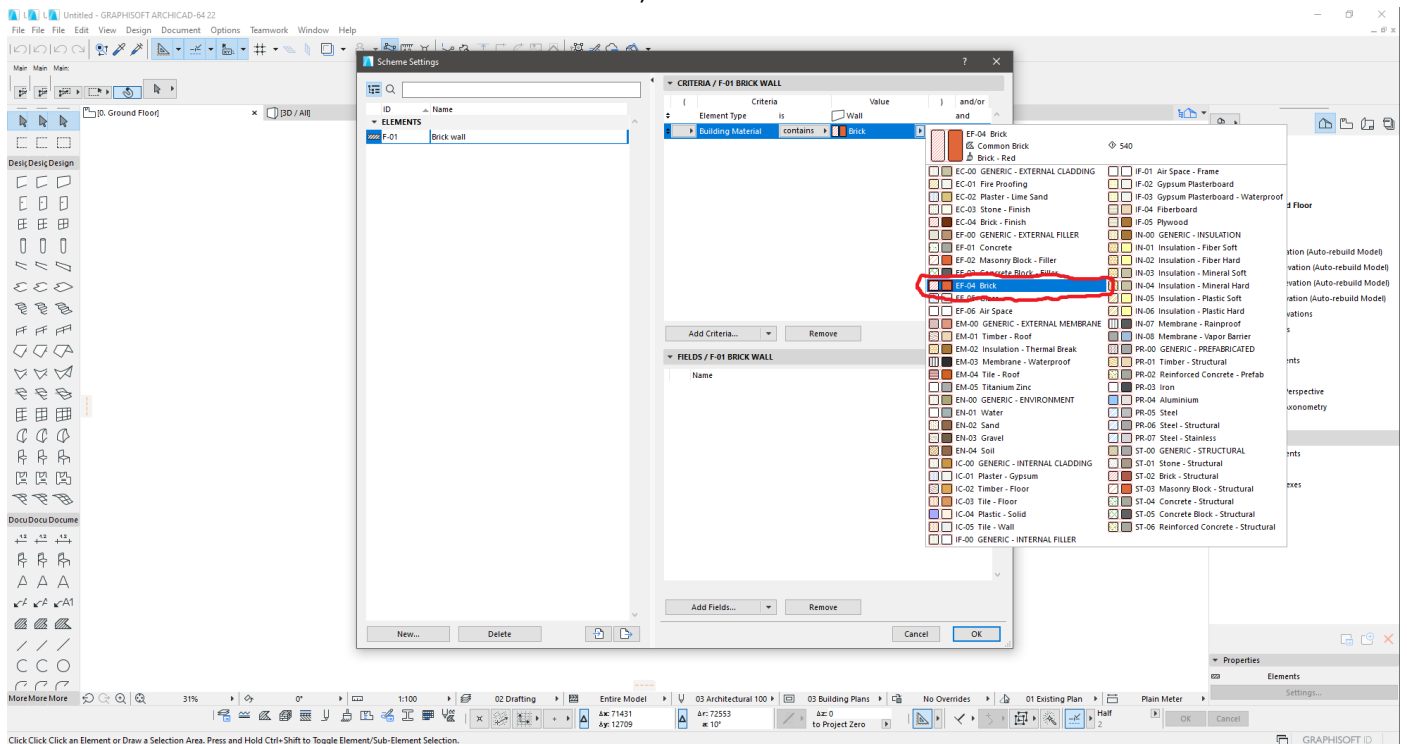
- Next you can add some „Criteria...”



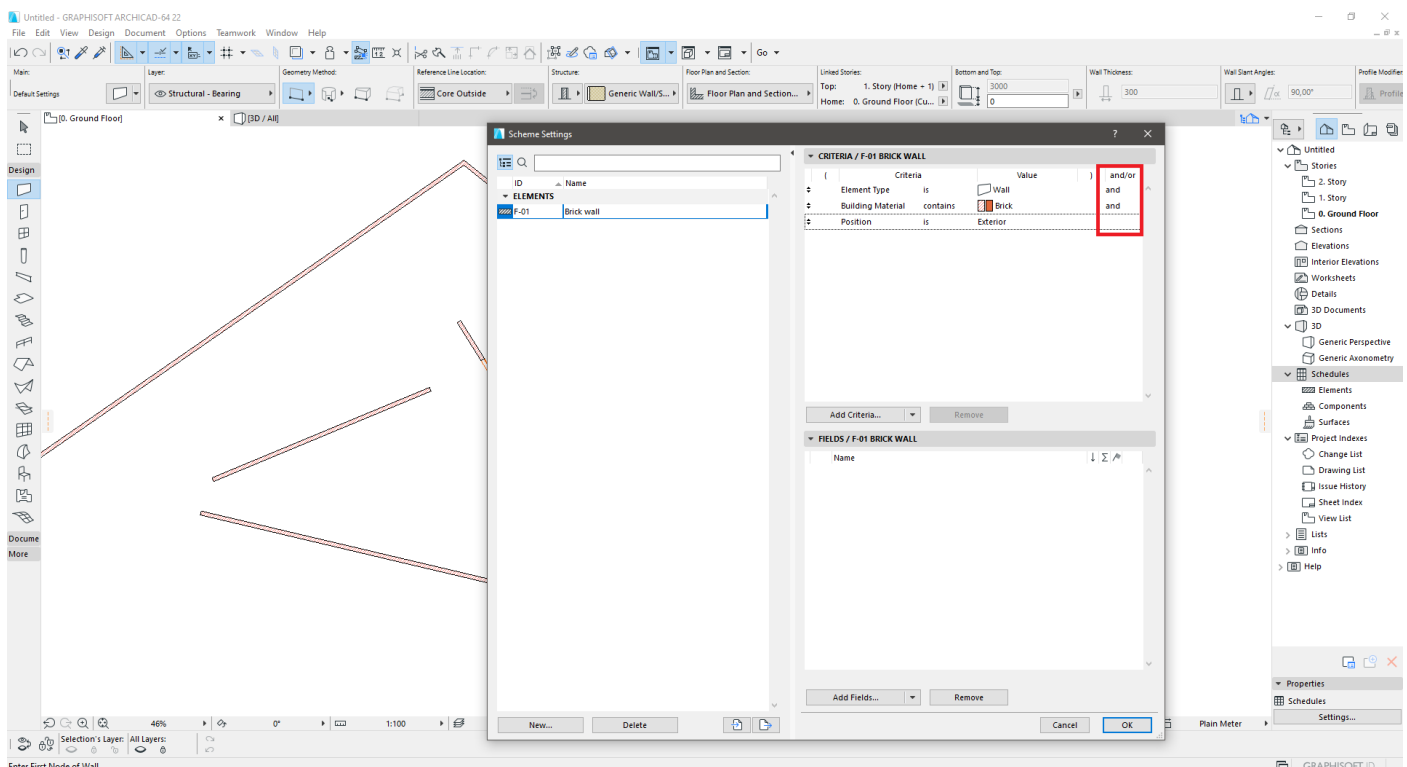
- Here you can add the parameters of the elements what you want to make a list
- Because in this sample task you need the area of the brick walls so you select the „**Building Material**” (please click on twice with the left button):



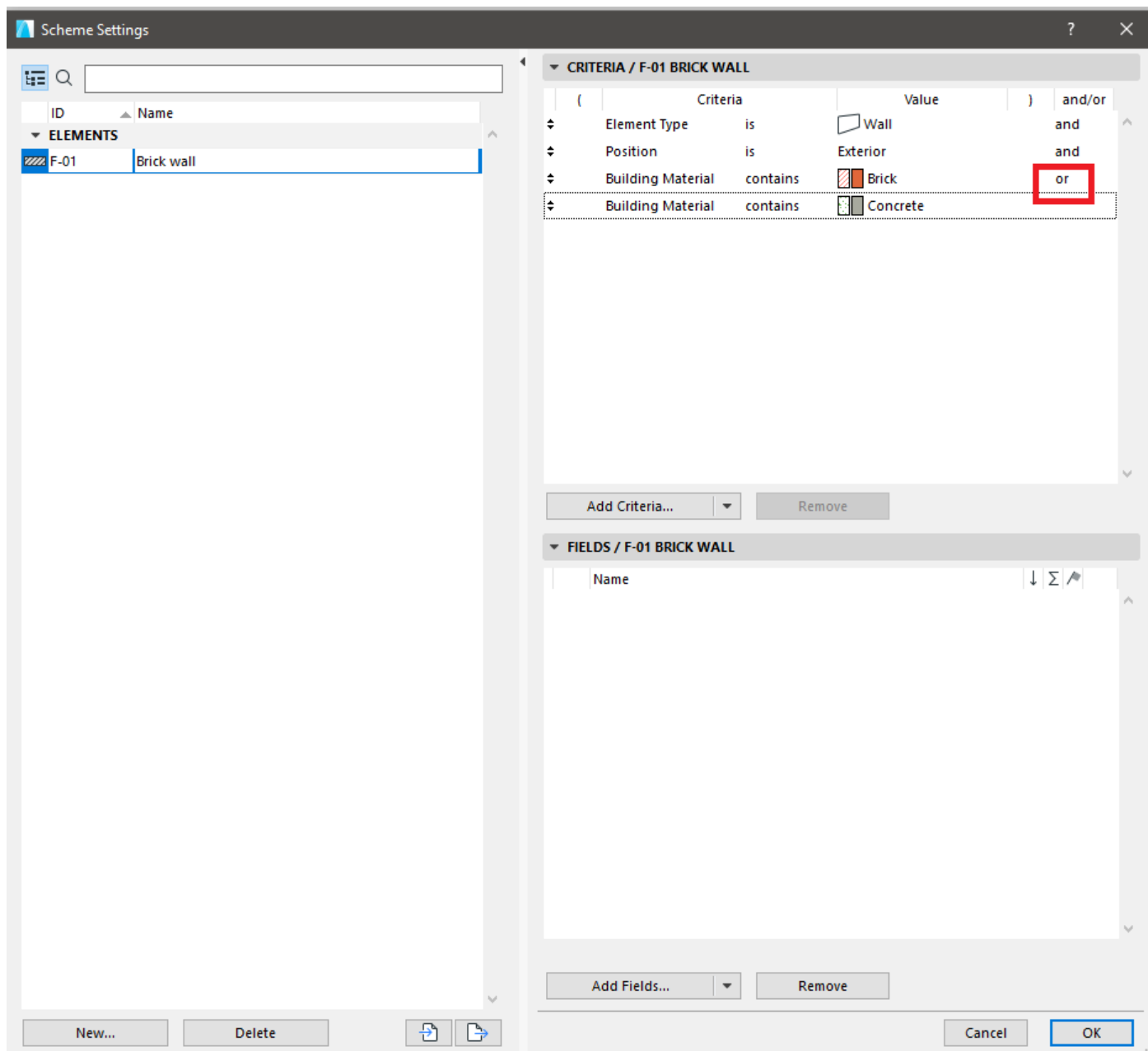
- After that I can choose the „**Building Materials**”. (In this example I choose the „**Brick**” because I need its area)



- Next we can add other “**Criteria...**” on the project
- if you type what you want to add on it you can search easier
- (for example in this sample task I added the „**Position**” of the wall – „**Exterior**”)



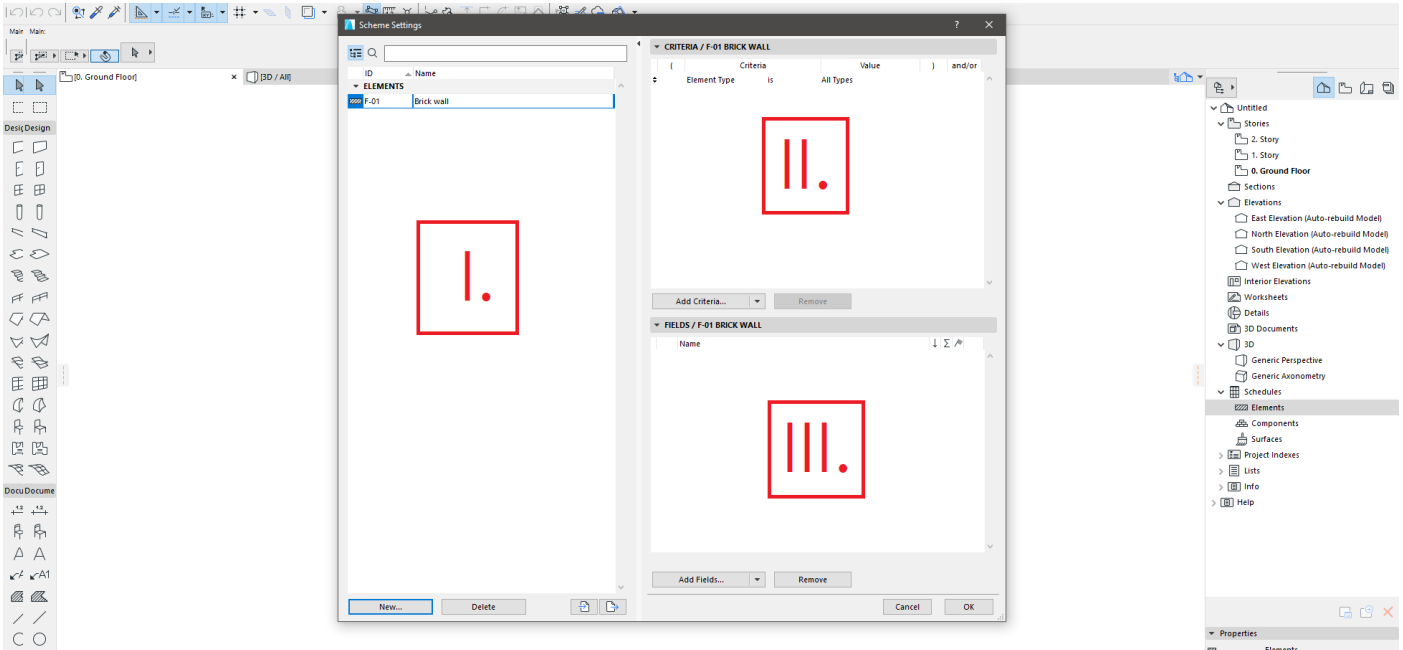
- on the red box you can see the „**and/or**” logical connection
- if you use „**and**” the software uses your criterias in the same time in one list



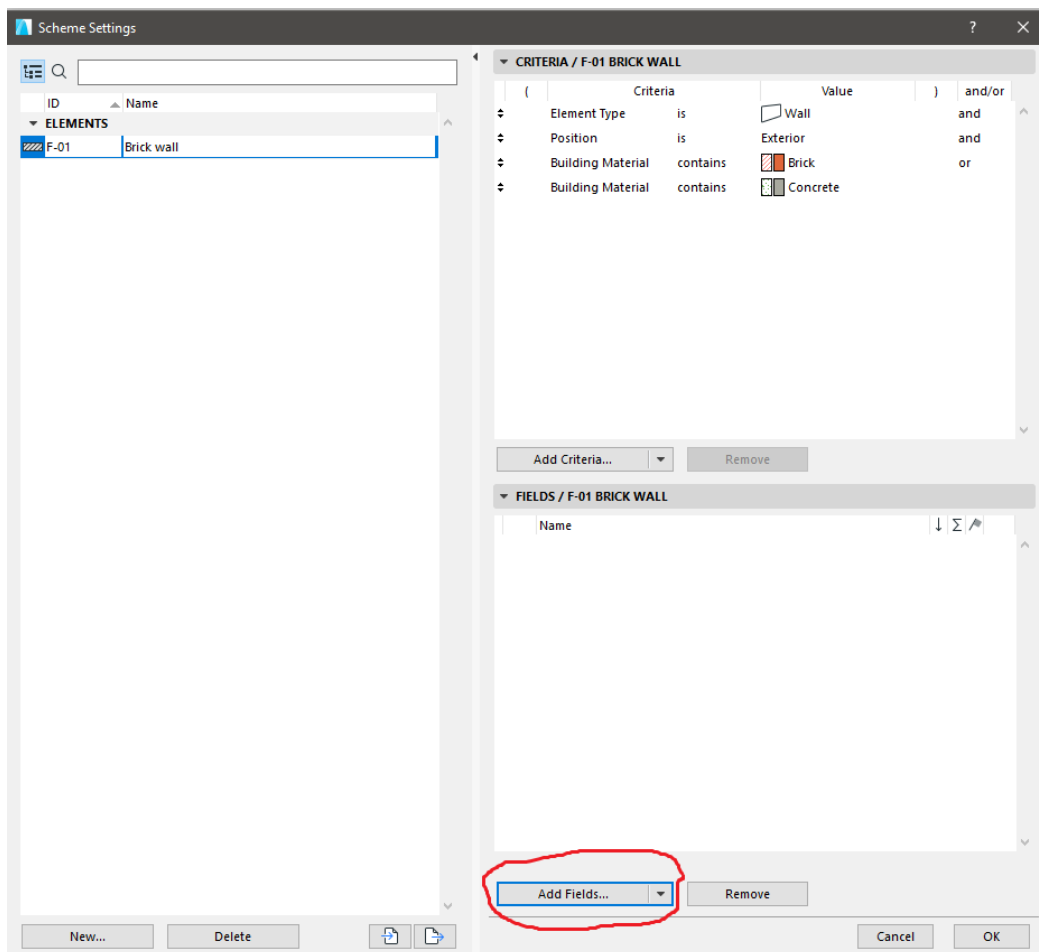
- if you have some elements with other materials (for example „**Concrete**”), but you want to make a schedule with all of the exterior wall you can choose the „**or**” logical connection because the program will make a list with the „**exterior**” „**Brick**” „**walls**” and the „**exterior**” „**Concrete**” „**walls**” too

III. The bottom of the right side –

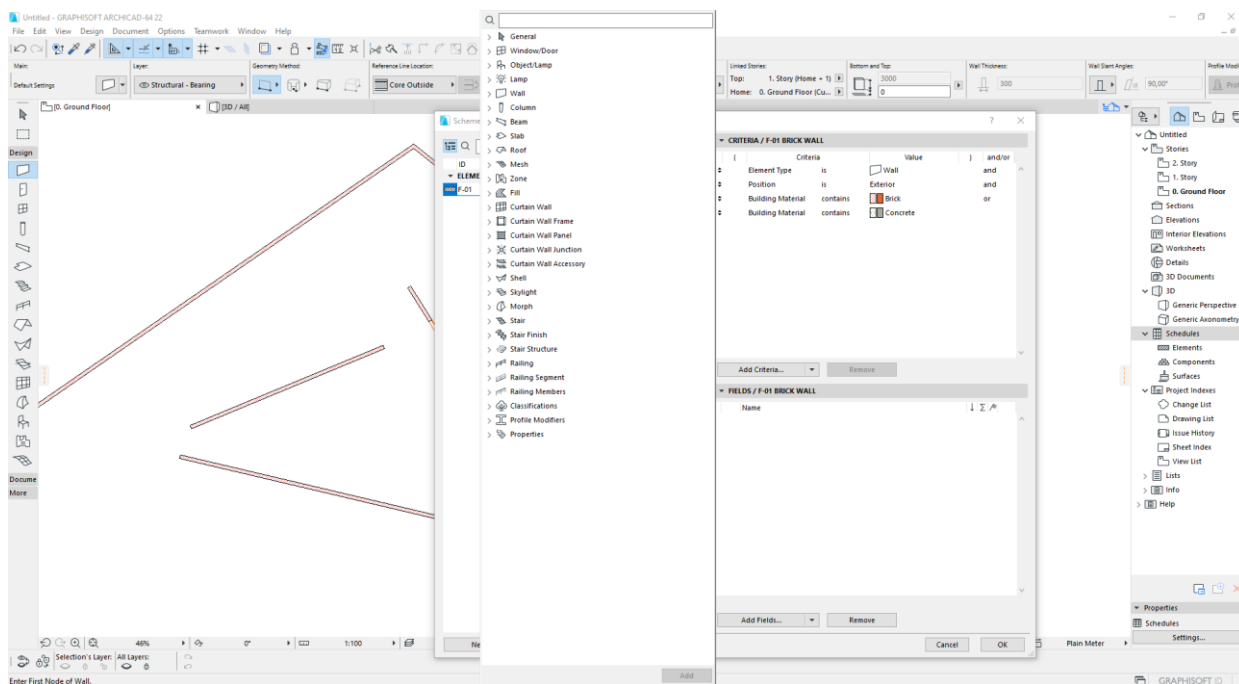
- here you can add the „Criteria” of the elements which you want to see on the schedule
- (for example Name of the material, quantity of the material and etc.)



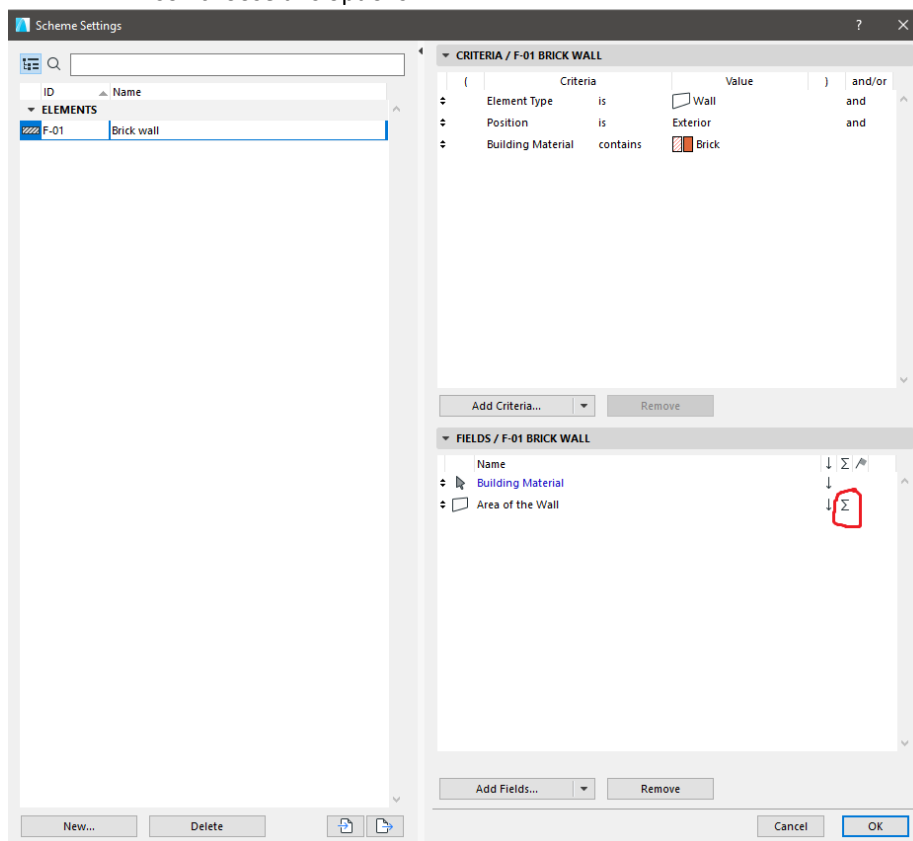
- click on the „Add Fields...”



- after that you can choose all of the „**Fields**”, which you would like to see on your schedule
- you can see so many options for the fields
- it’s more easier to find an exact “**Field**” if you type the name of the field on the searching panel

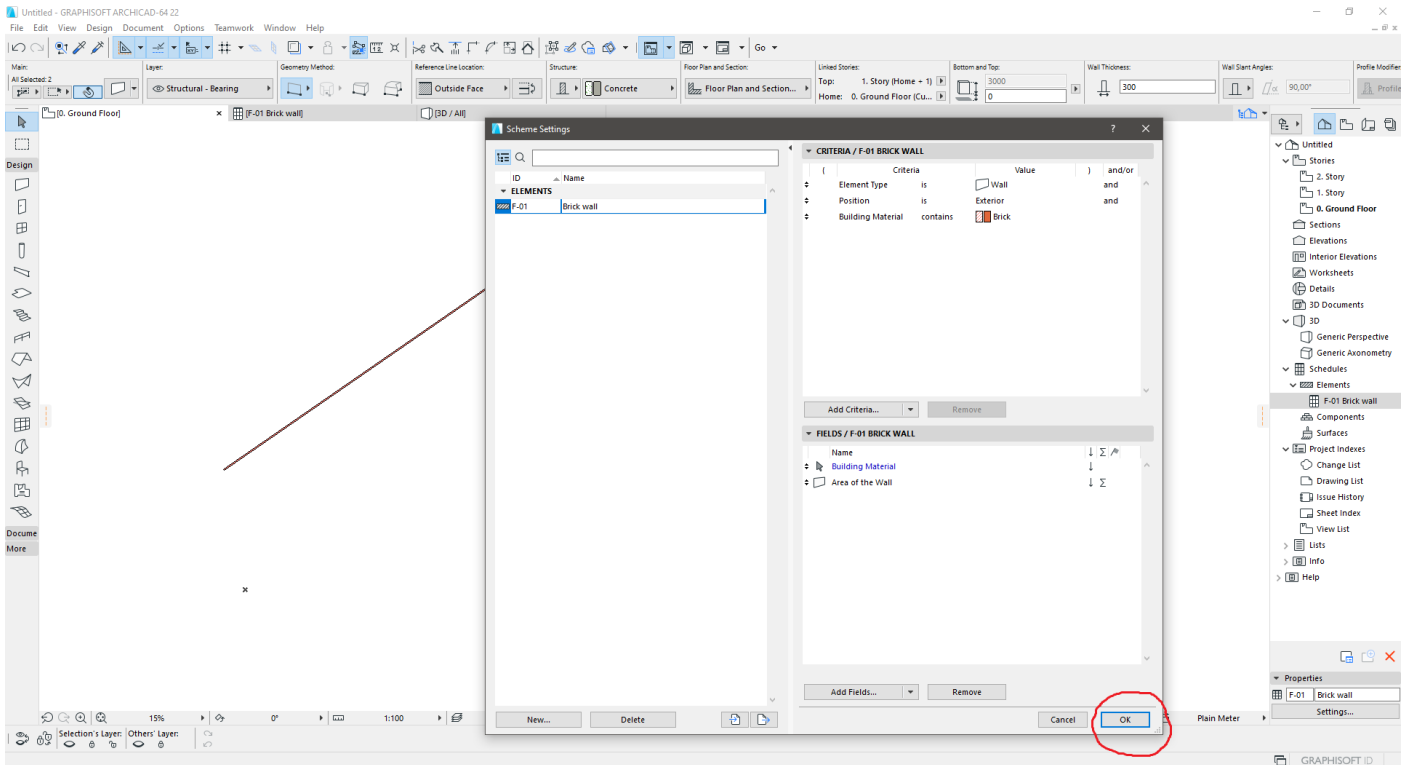


- in this sample task you need the name of the „**Building material**” and the „**Area of the wall**”, so I choose this options

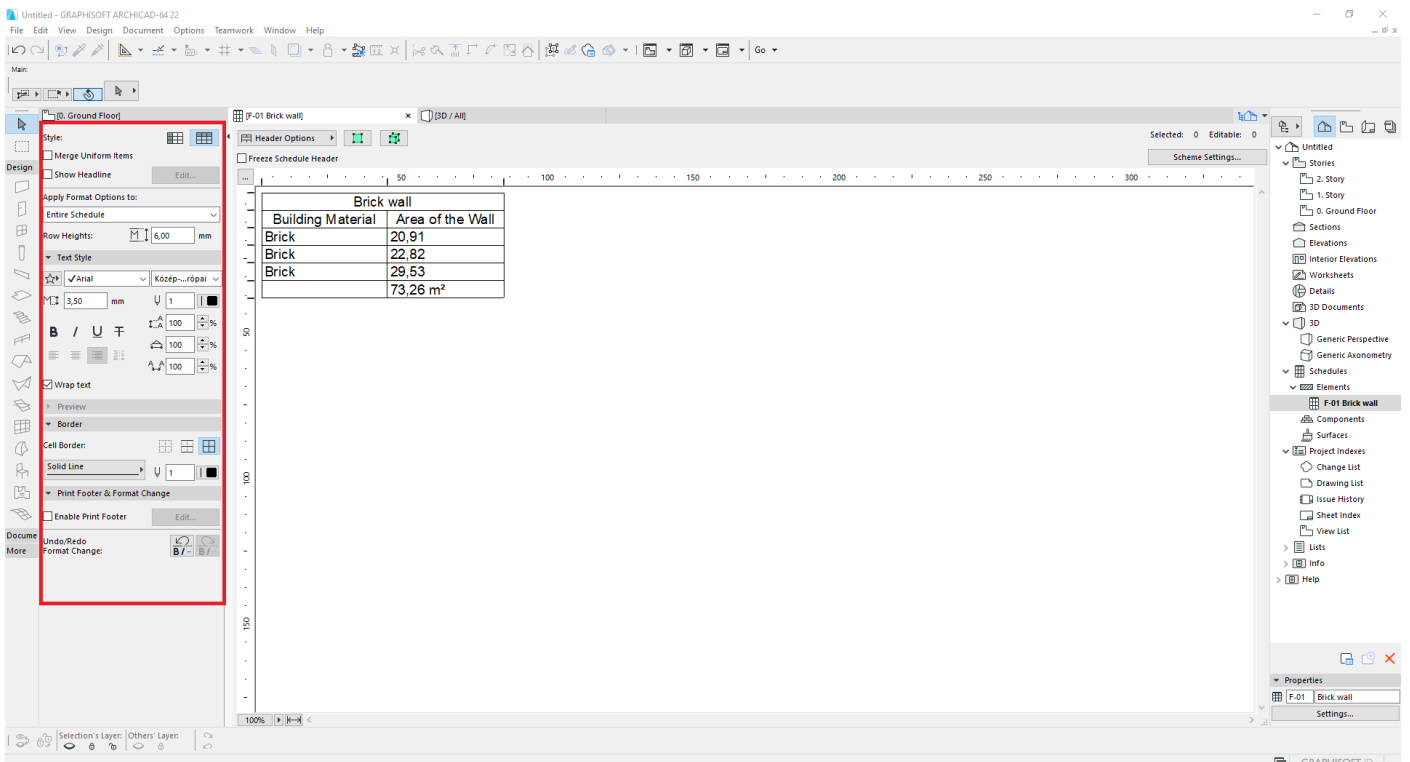


- if you click on the „ Σ ” icon you will see the finally quantity of the material with its unit

- After that when you choose all of the options click on „OK” and the program will make a schedule for you

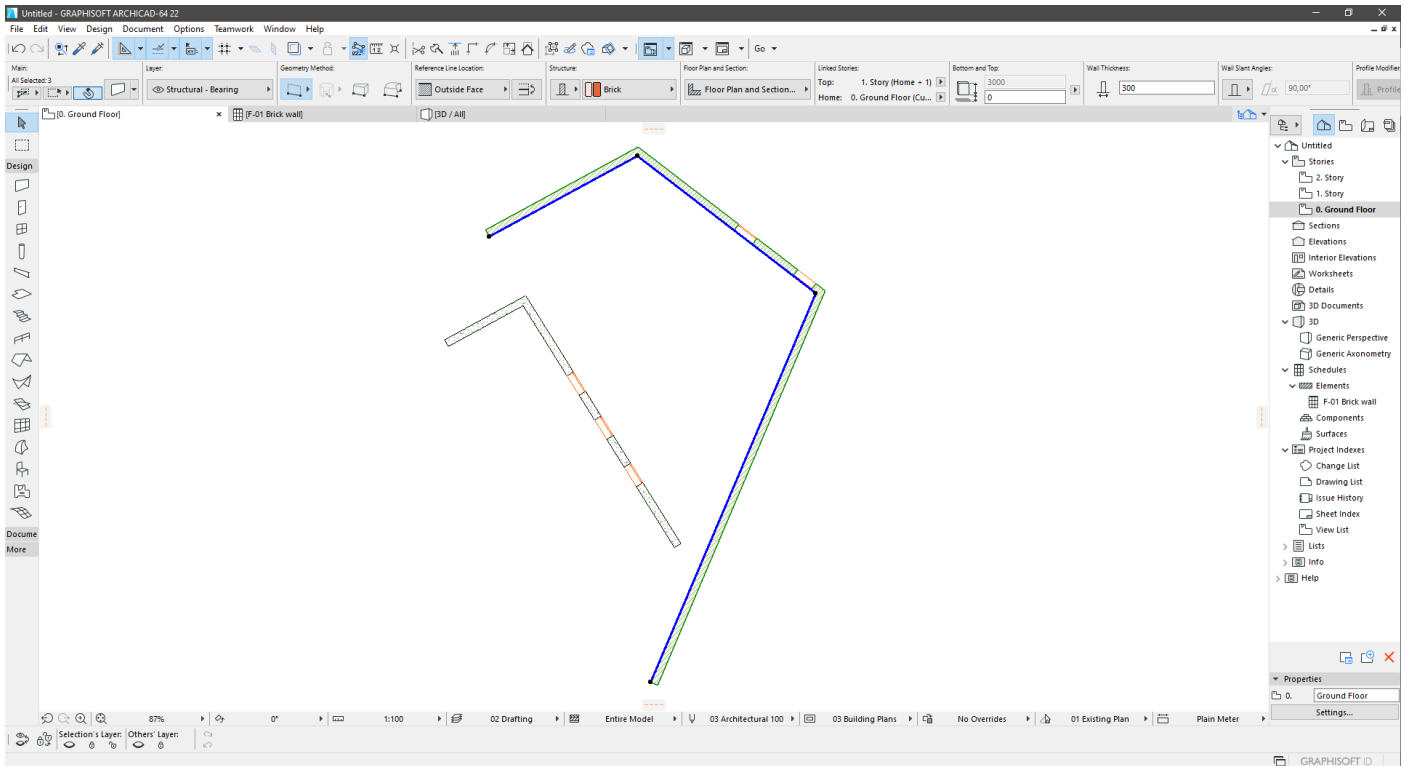
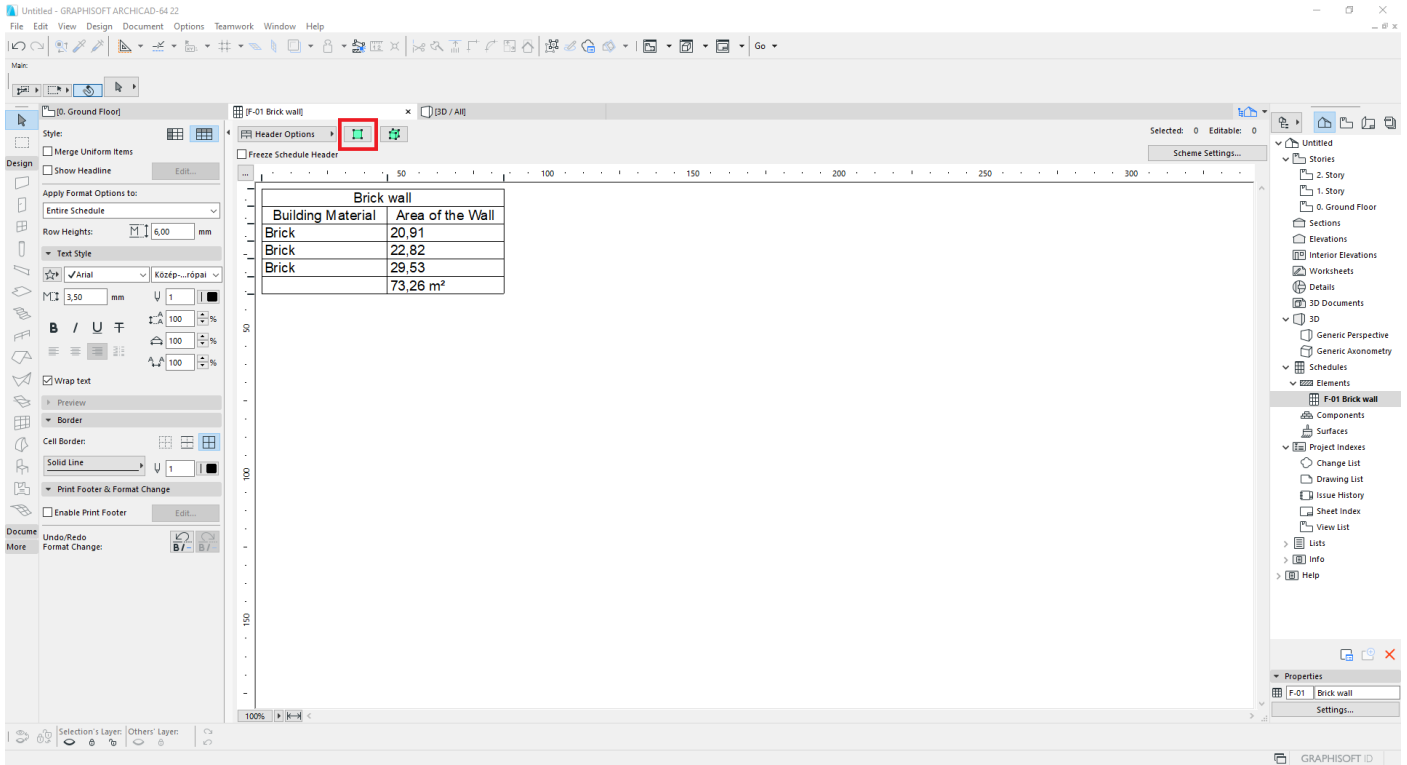


- You will see this window:

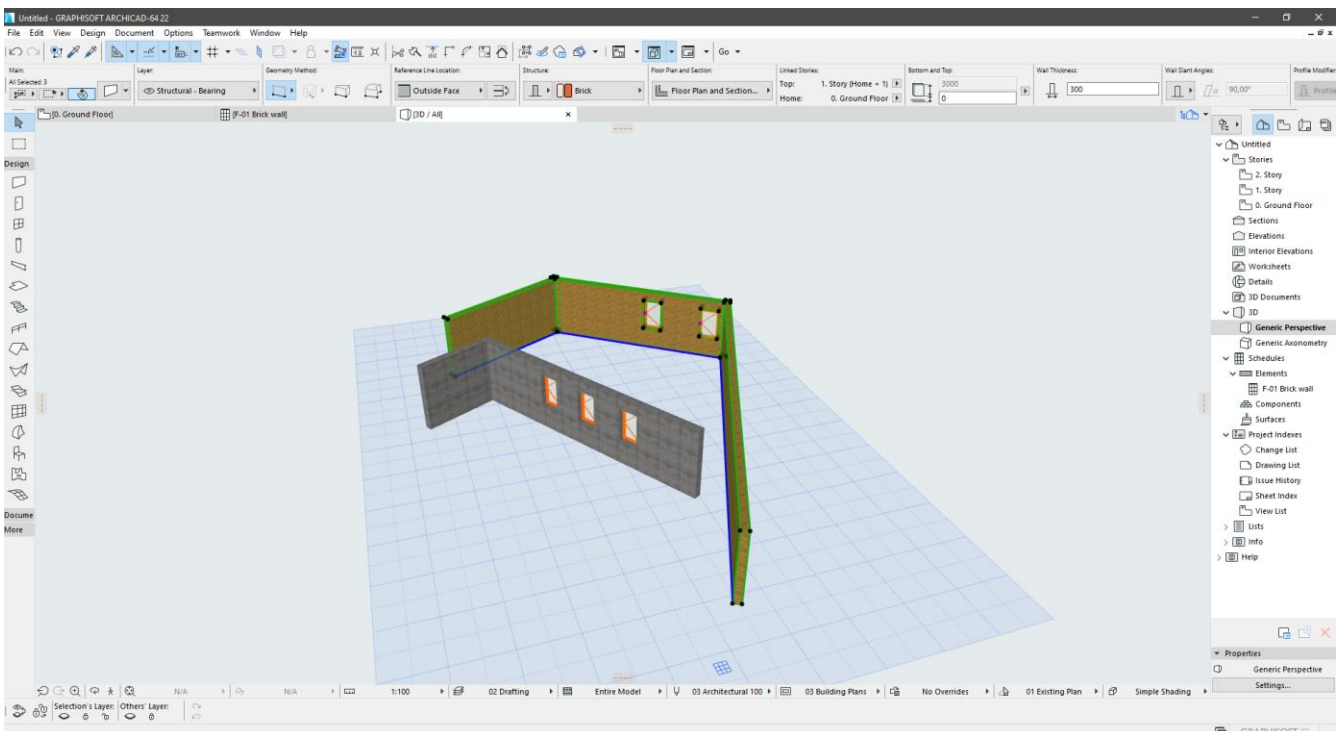
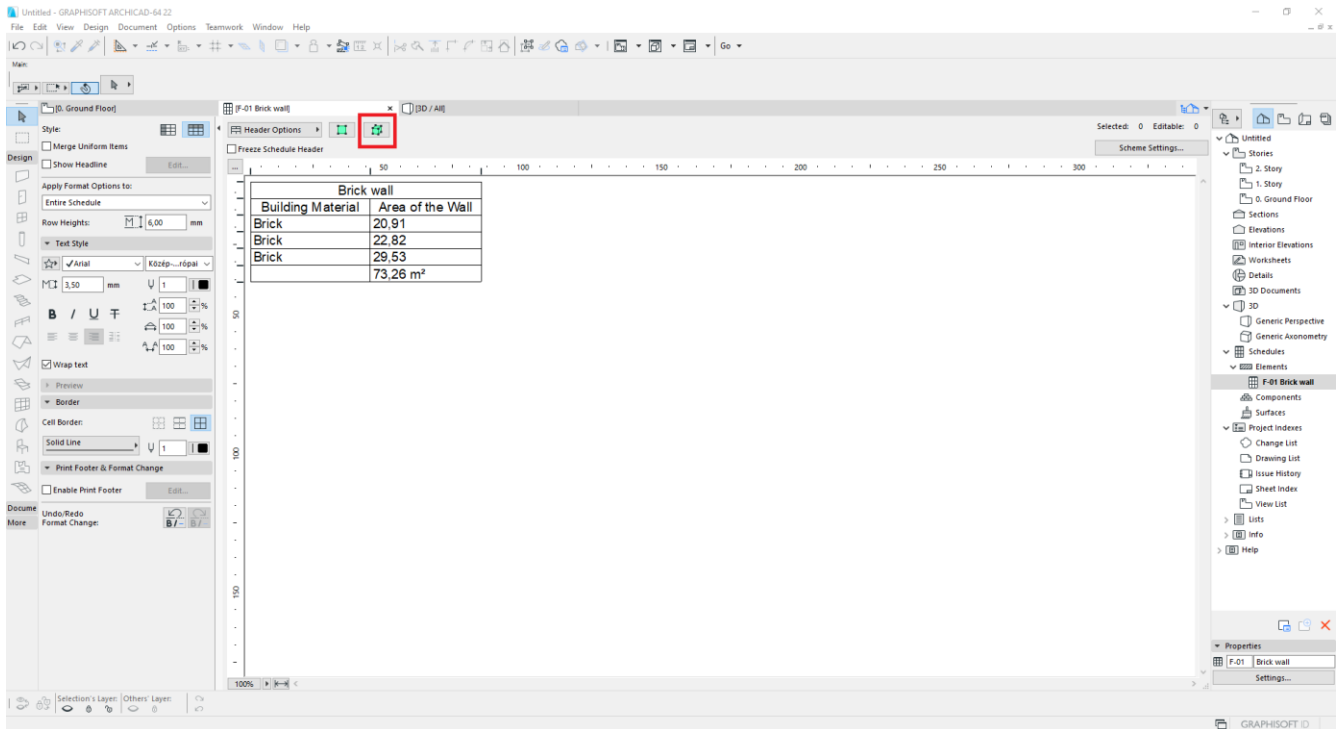


- o on the left side you can format the schedule

- you can see the quantified elements with these options:
 - o on „2D”



- and with this icon you can see it on „3D”



Here you can see some help from the internet, for the cost calculation:

- <http://www.ekt.bme.hu/CM-BSC-MS/BIllOfQuantities.pdf?fbclid=IwAR0VG0Hzzl4e7pnxLnMNMVdFO03OB8ykIthi1mFV4MxawqZX5iOJokdc>
- http://www.ekt.bme.hu/ArchEng/Calculation.pdf?fbclid=IwAR3Beb1b-oLufwRoEOY_jjQJkYeXEAeDJ6PpN5-WZhbFyaA89Mac0vbXqJY
- <https://deltauniv.edu.eg/new/engineering/wp-content/uploads/Cost-Ch2.pdf?fbclid=IwAR2xhcMIFenC-44myzMMXLNmZxEDzRFIOhbL75t6FhIRun34vDOrpP-Dq8U>
- <https://constructible.trimble.com/construction-industry/how-to-master-the-takeoff-in-construction-estimating?fbclid=IwAR30dMr9023W0W5Zam4ceqNC1PFO2RepUpezcINvpVZHiy-hGeuc1WieUnc>