

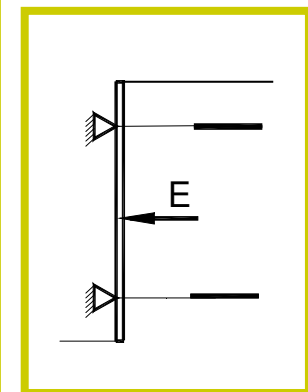
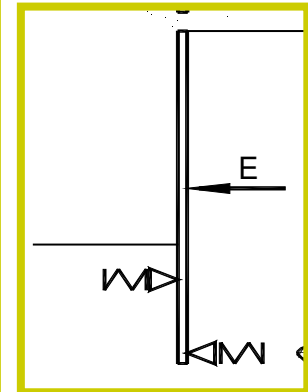
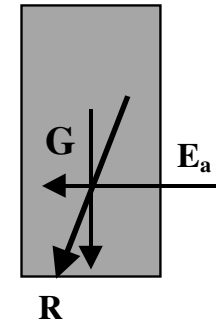
# Támszerkezetek

# Támszerkezetek funkciója

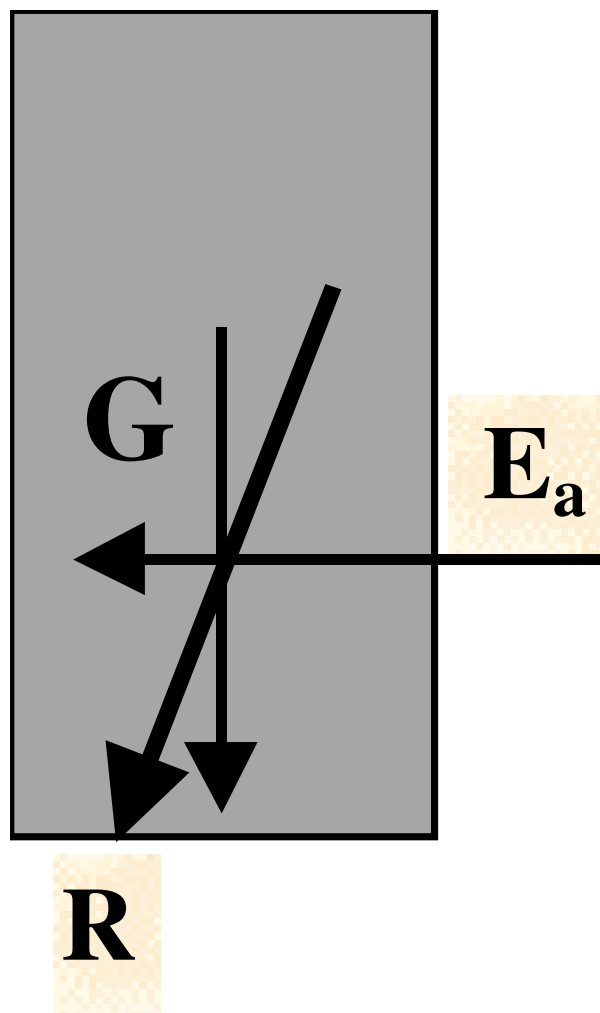
- Ideiglenes tereplépcsők oldalhatárolása
  - árkok
  - munkagödrök
- Felszín alatti építmények oldalfala
  - pincék, mélygarázsok
  - aluljárók, metrók
- Földművek, lejtők stabilizálása
  - hídfők, partfalak
  - bevágások, töltések
  - lejtők

# Támszerkezetek

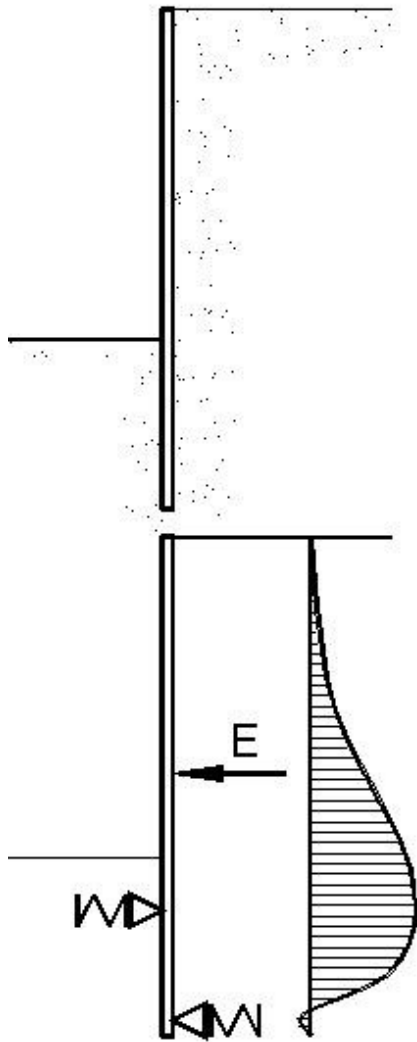
- Támfalak
  - súlytámfalak
  - szögtámfalak
  - máglyafalak, gabionfalak
  - vasalt földtámfal, szegezett fal
- Befogott (támaszkodó) falak
  - résfalak
  - cölöpfalak
  - szádfalak
  - berlini dúcolat
- Horgonyzott (megtámasztott) szerkezetek
  - dúcolatok
  - elemes falak
  - bordák
  - gerendák



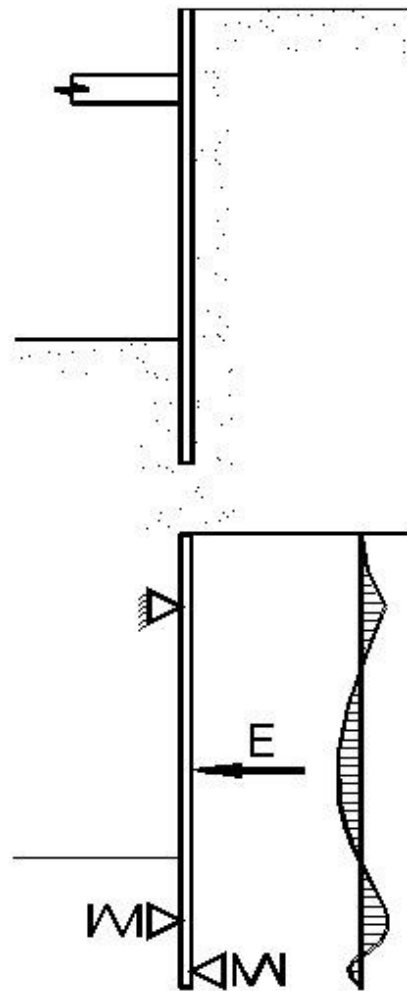
# Támfalak statikája



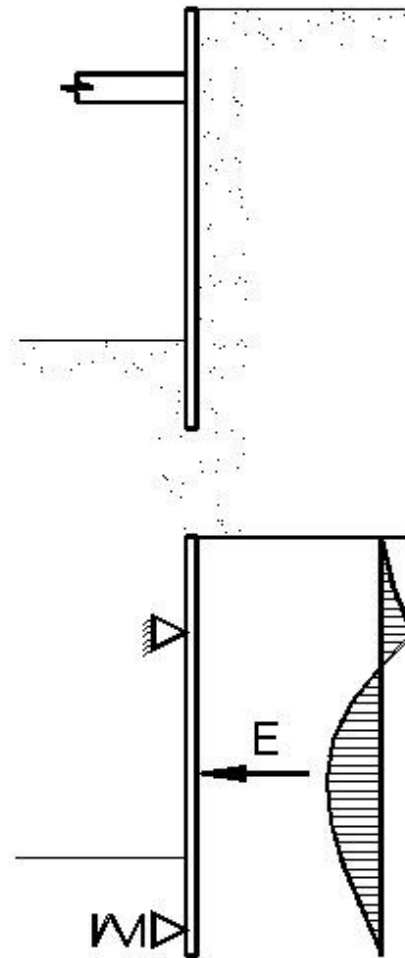
# Befogott (támaszkodó) és/vagy megtámasztott (kihorgonyozott) támszerkezetek statikája



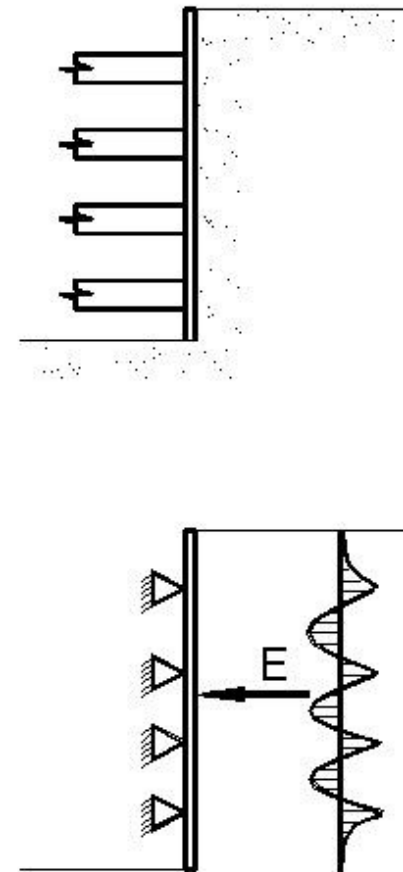
befogott



befogott  
megtámasztott

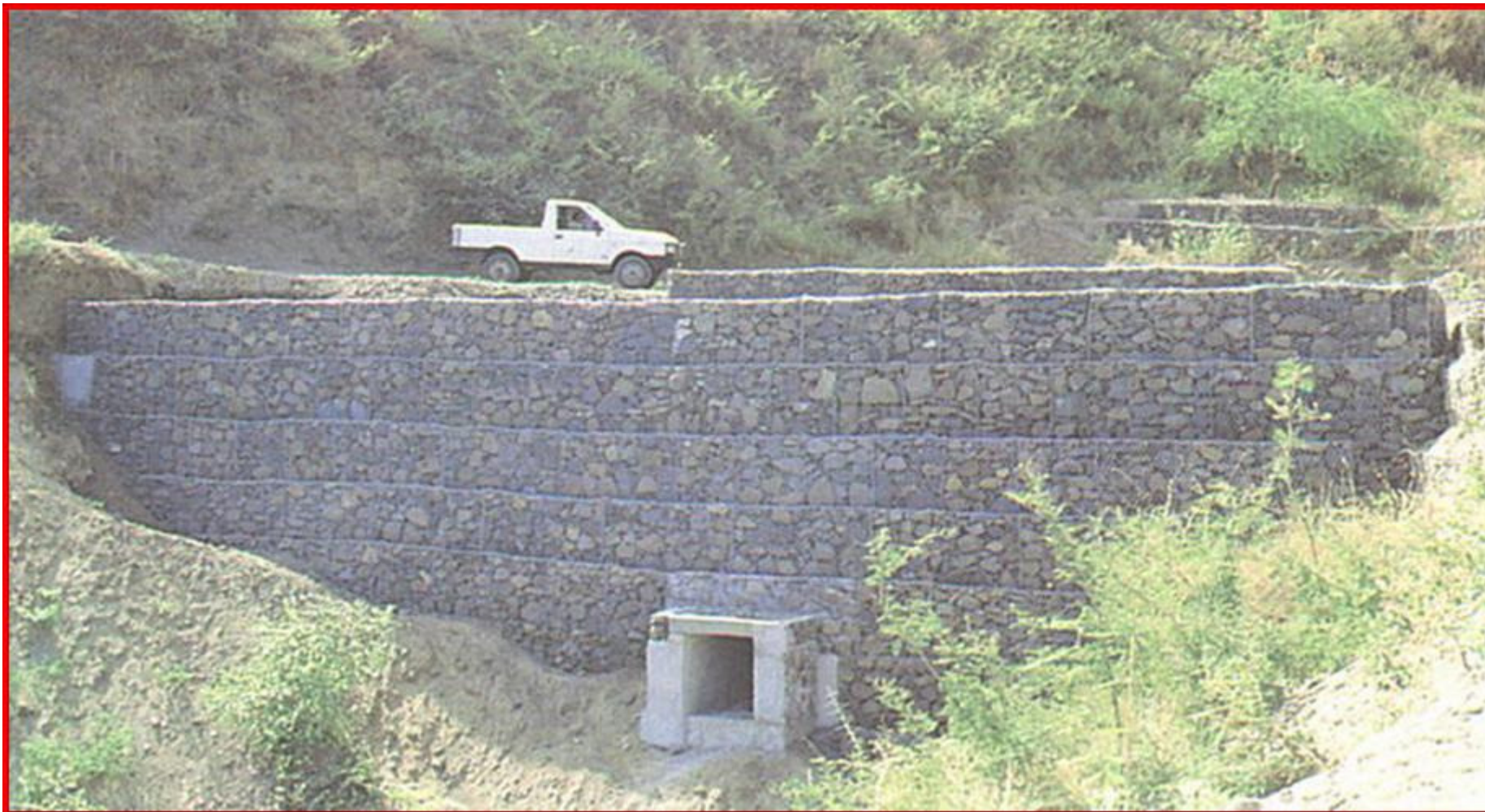


támaszkodó  
megtámasztott



több sorban  
megtámasztott

# Támfalak





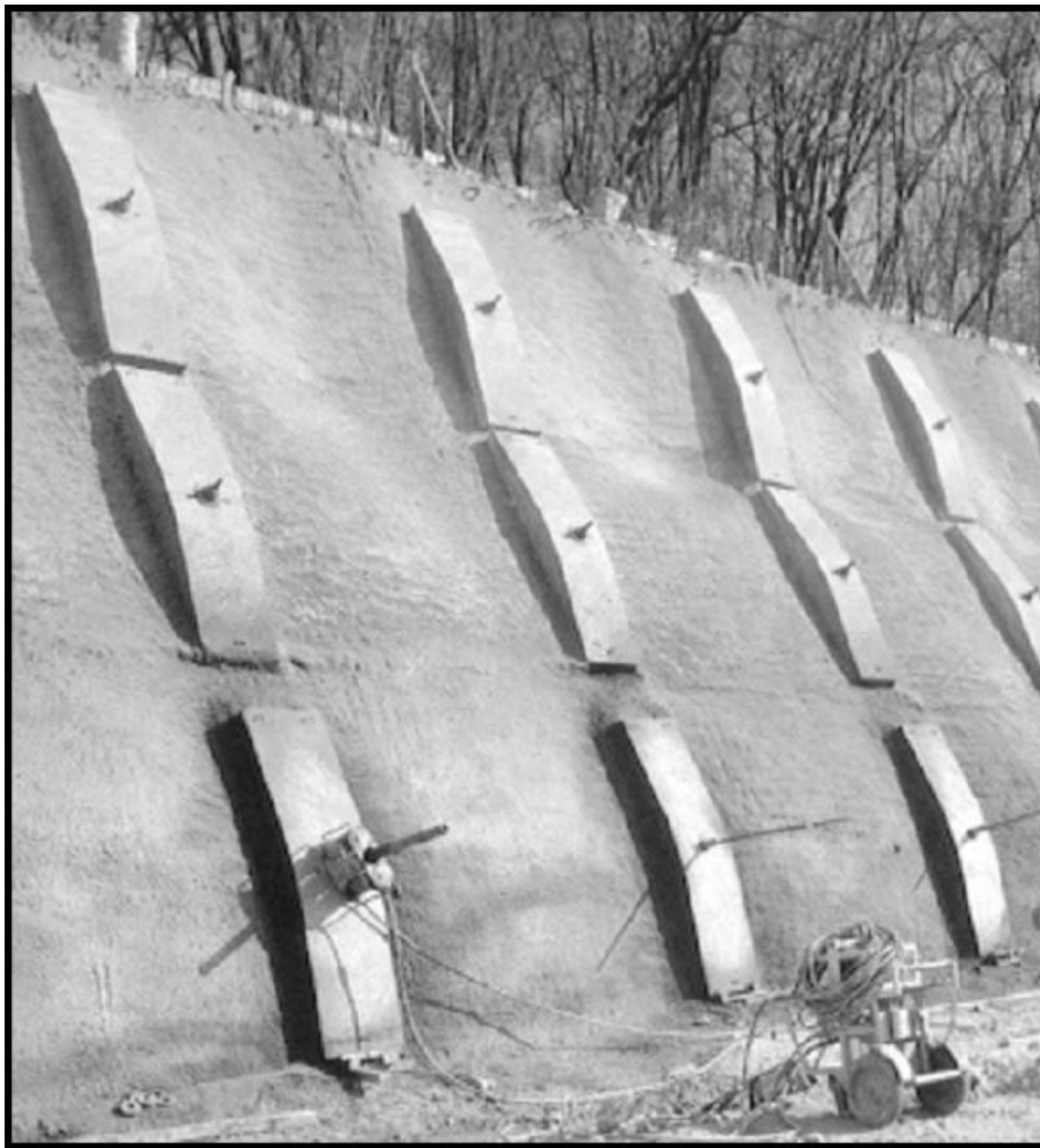


**Befogott  
fal**

Megtámasztott  
szerkezet







Elemes  
horgonyfal

**Dúcolatok**

# Munkaárok dúcolata



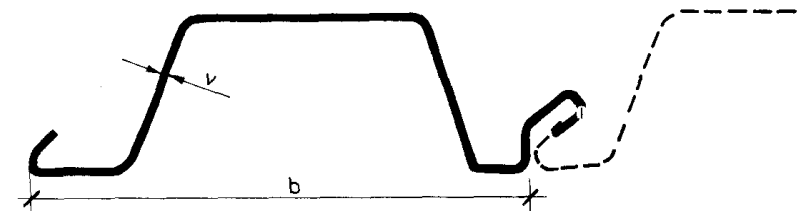
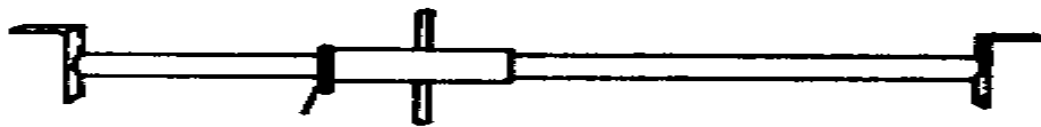
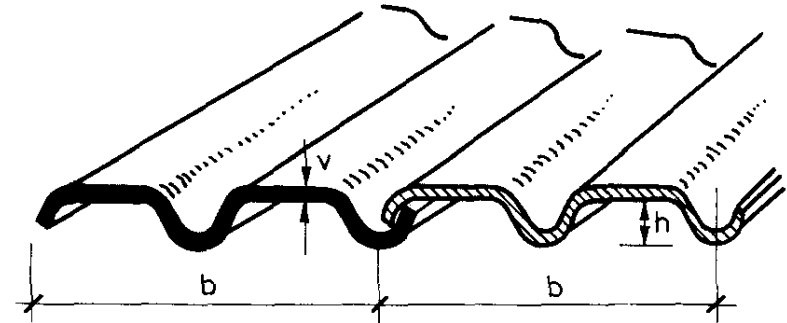
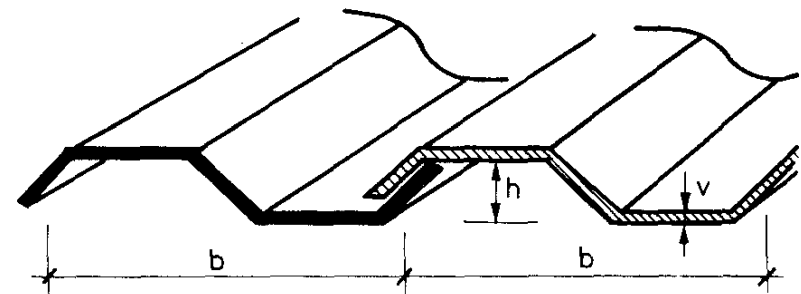
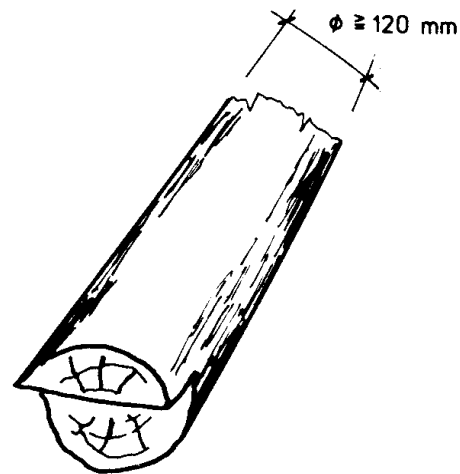
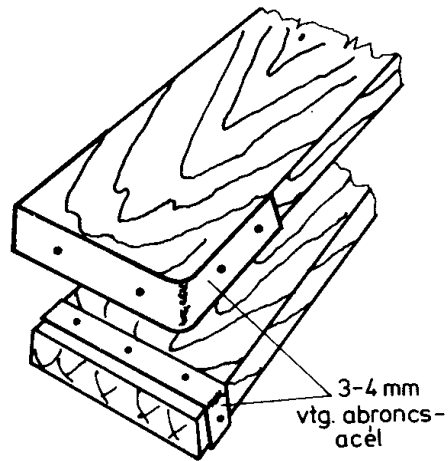


# Keretes aknadúcolat

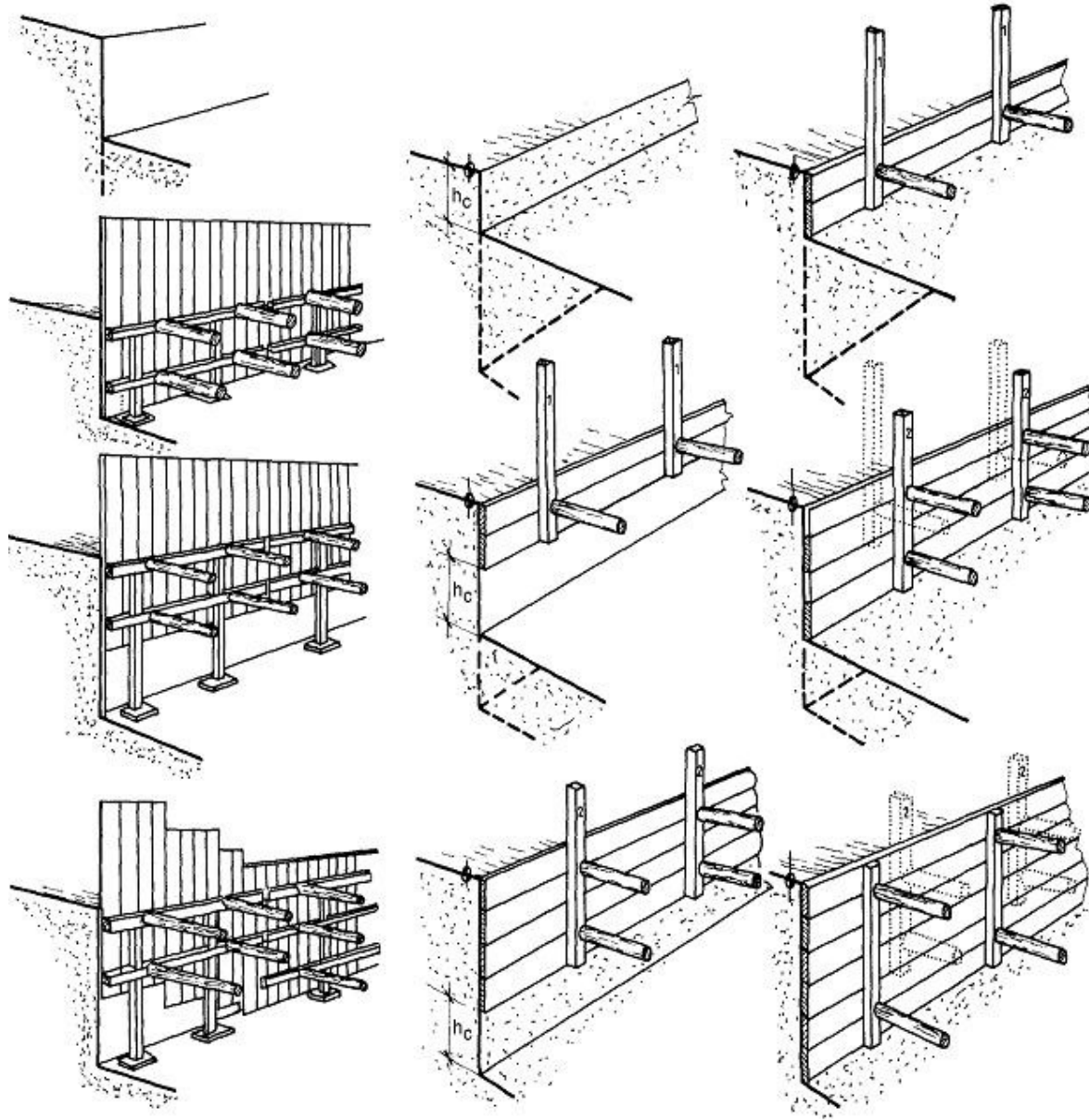


## Dúcolatok szokásos elemei

	fa	acél
<b>palló</b>	ált. 48 mm vastag palló	Union, Pátia, CS hullámlemezek
<b>heveder</b>	gerendák 12-24 cm oldalhosszal	I, vagy U tartók
<b>dúc</b>	gömbfa min. 12 cm átmérővel	csavaros dúc, cső, I-tartó

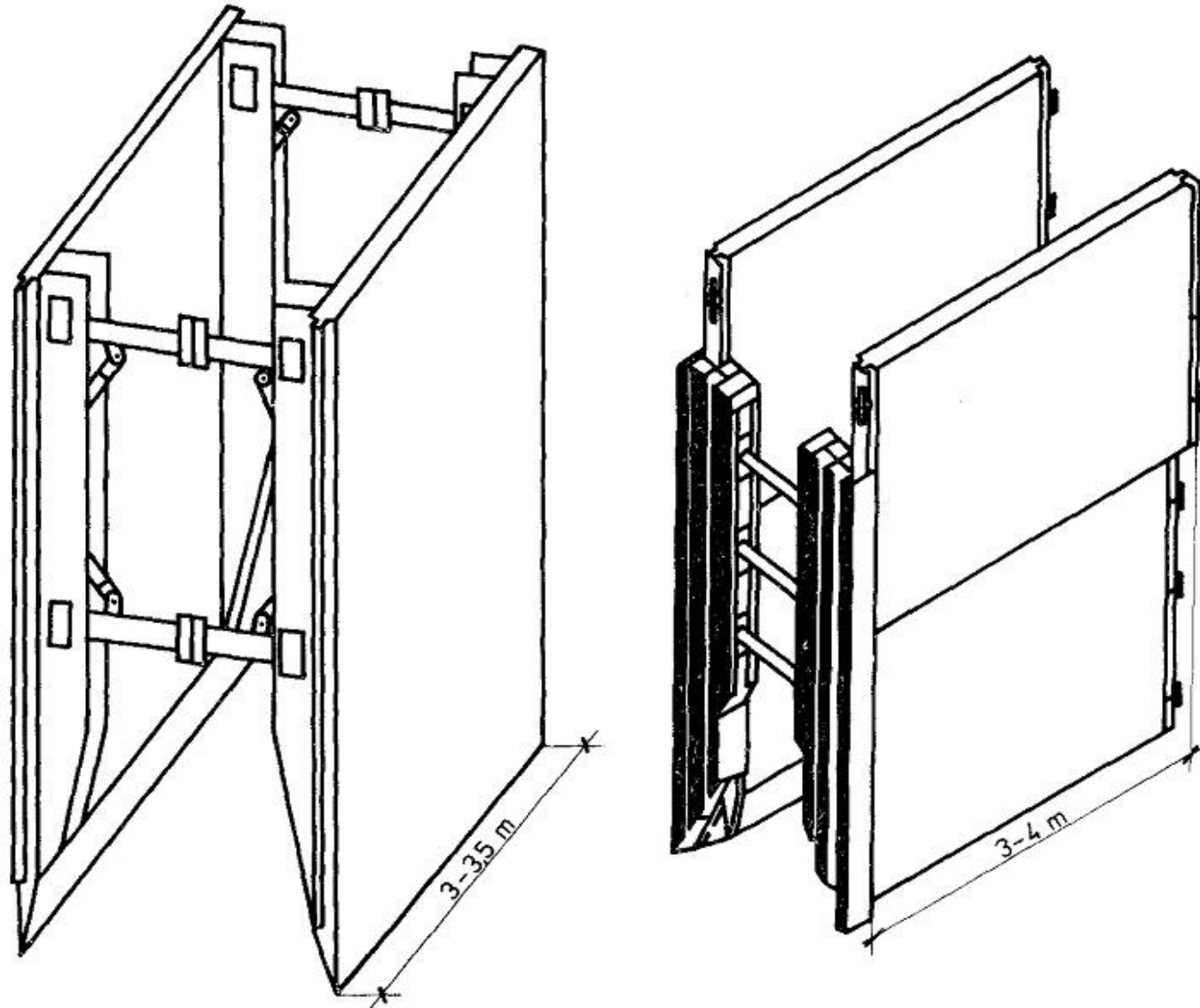


# Utánhajtott pallózás





# Előregyártott dúctáblák

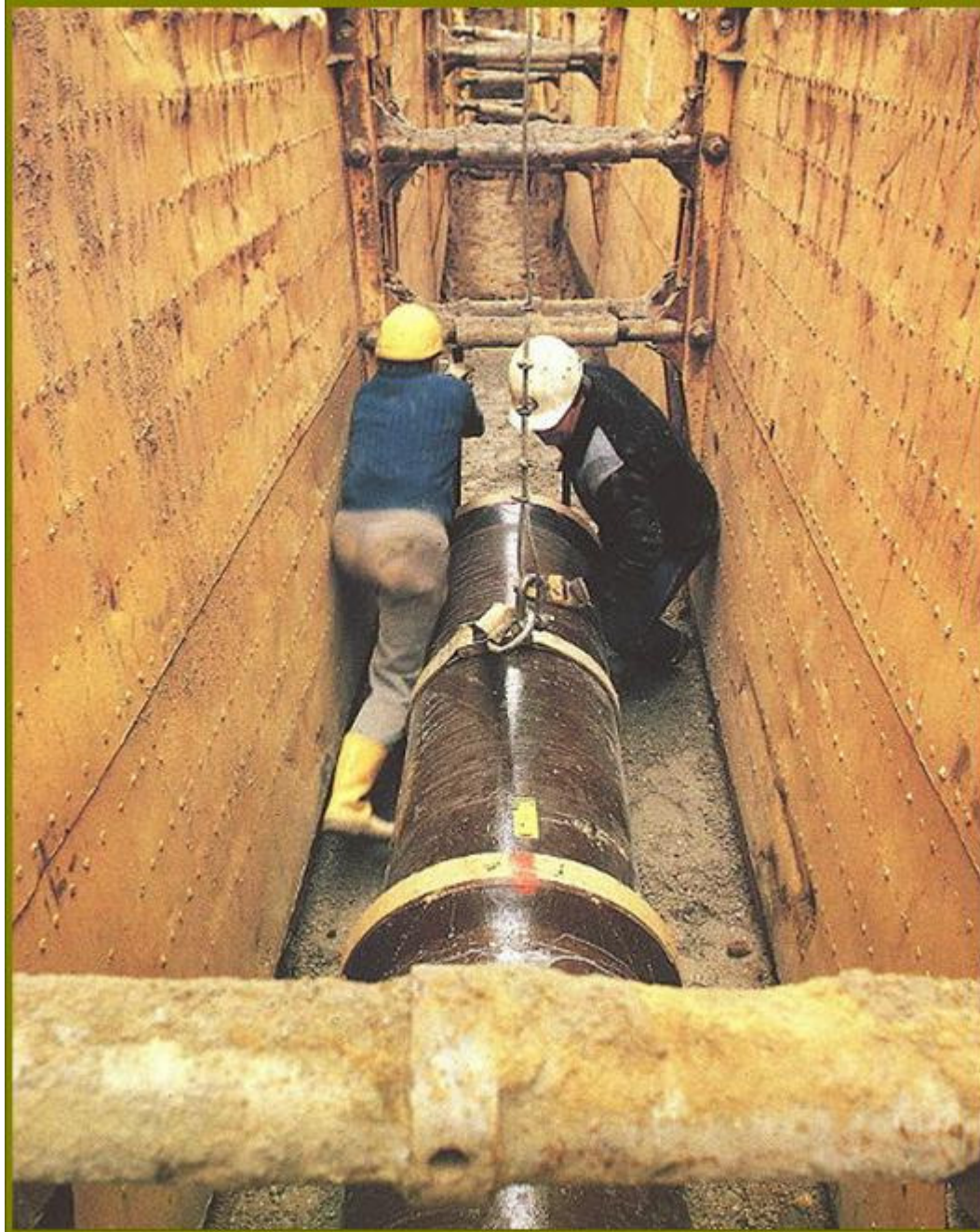




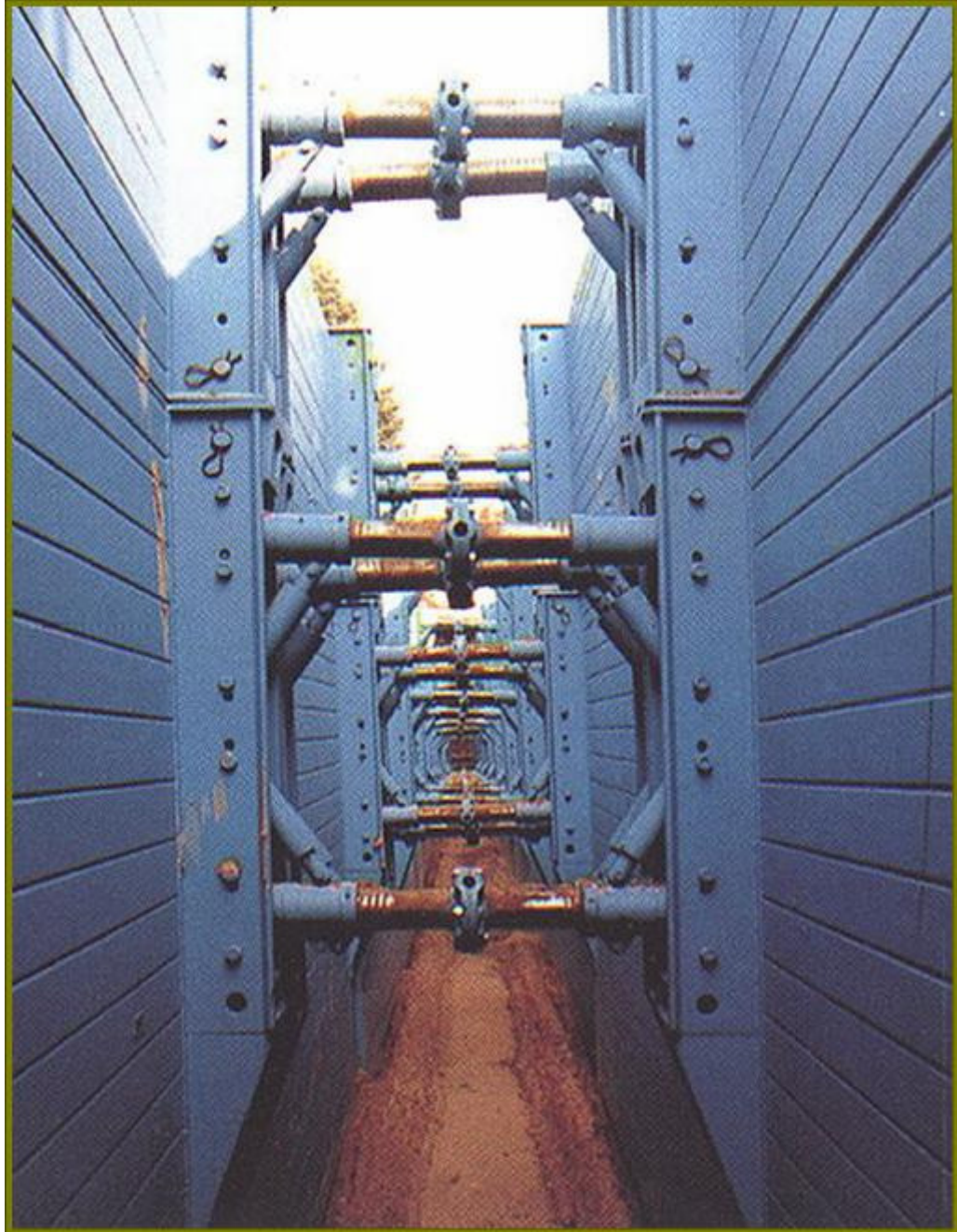










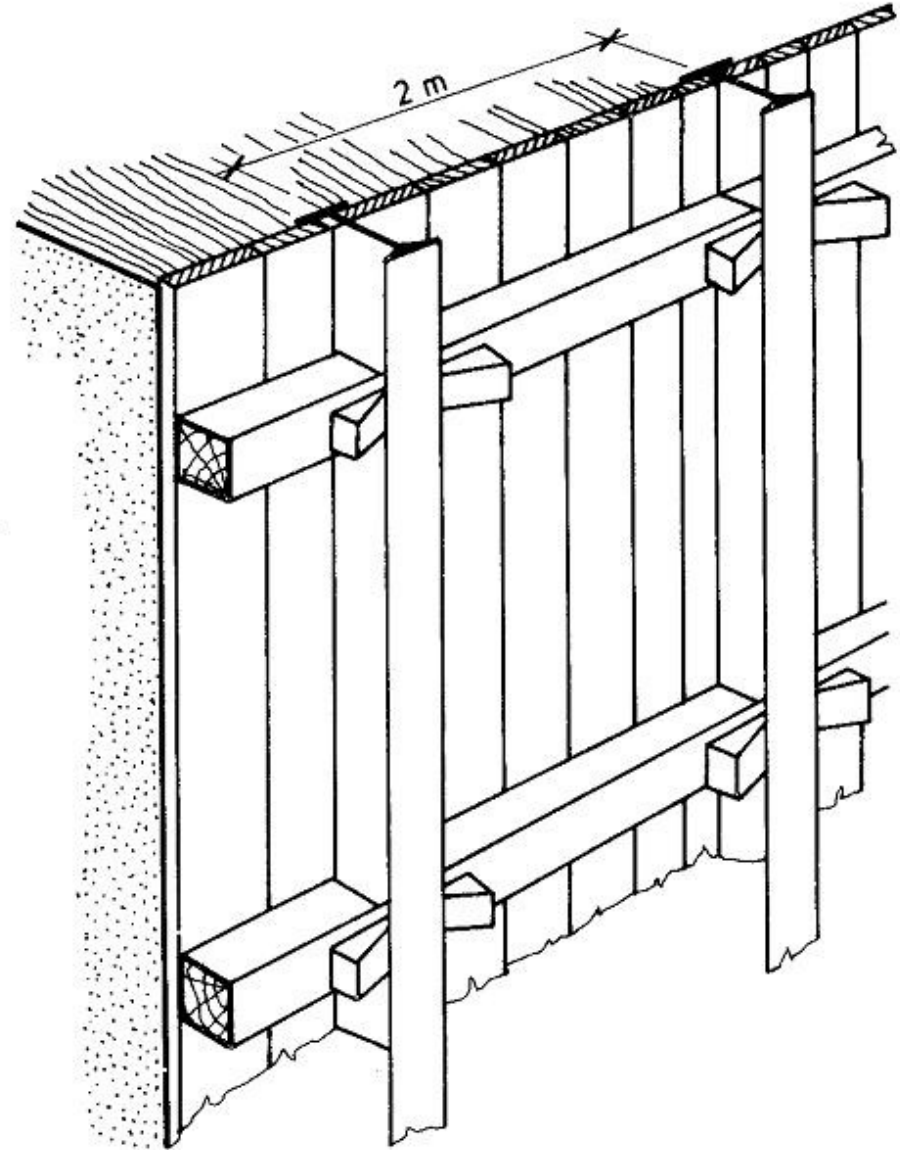
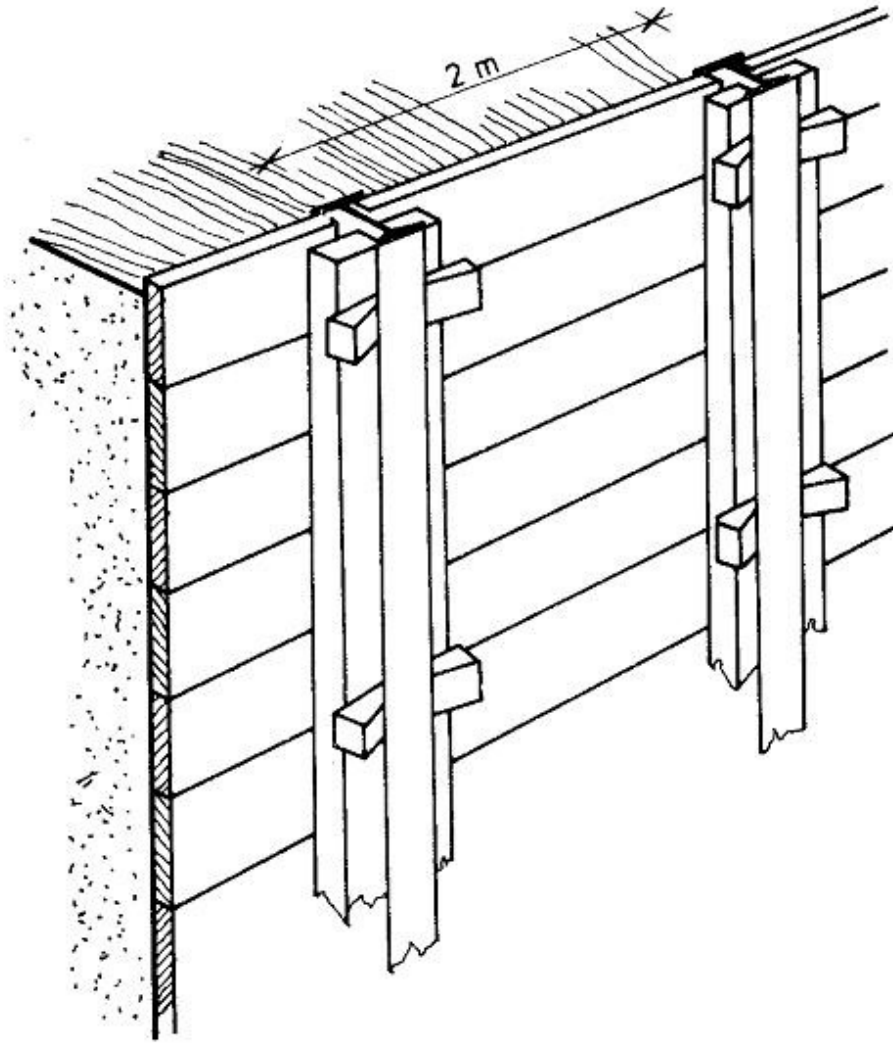




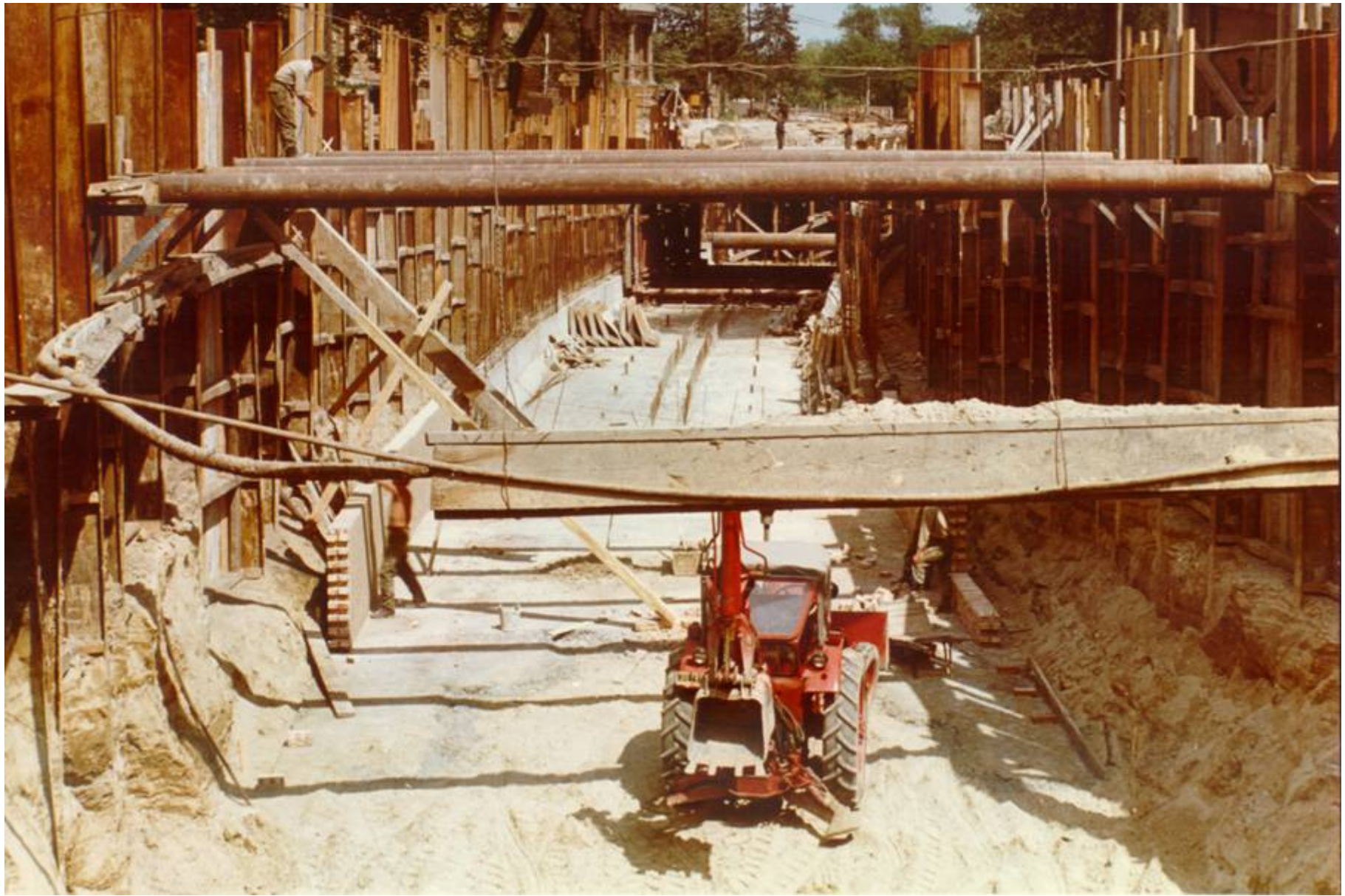


**Berlini dúcolat**

# Berlini dúcolat

















# Száfalazás

**Alkalmazási terület**



























Abb. 30: Grundwasserwanne Guntersblum

Lehajtás

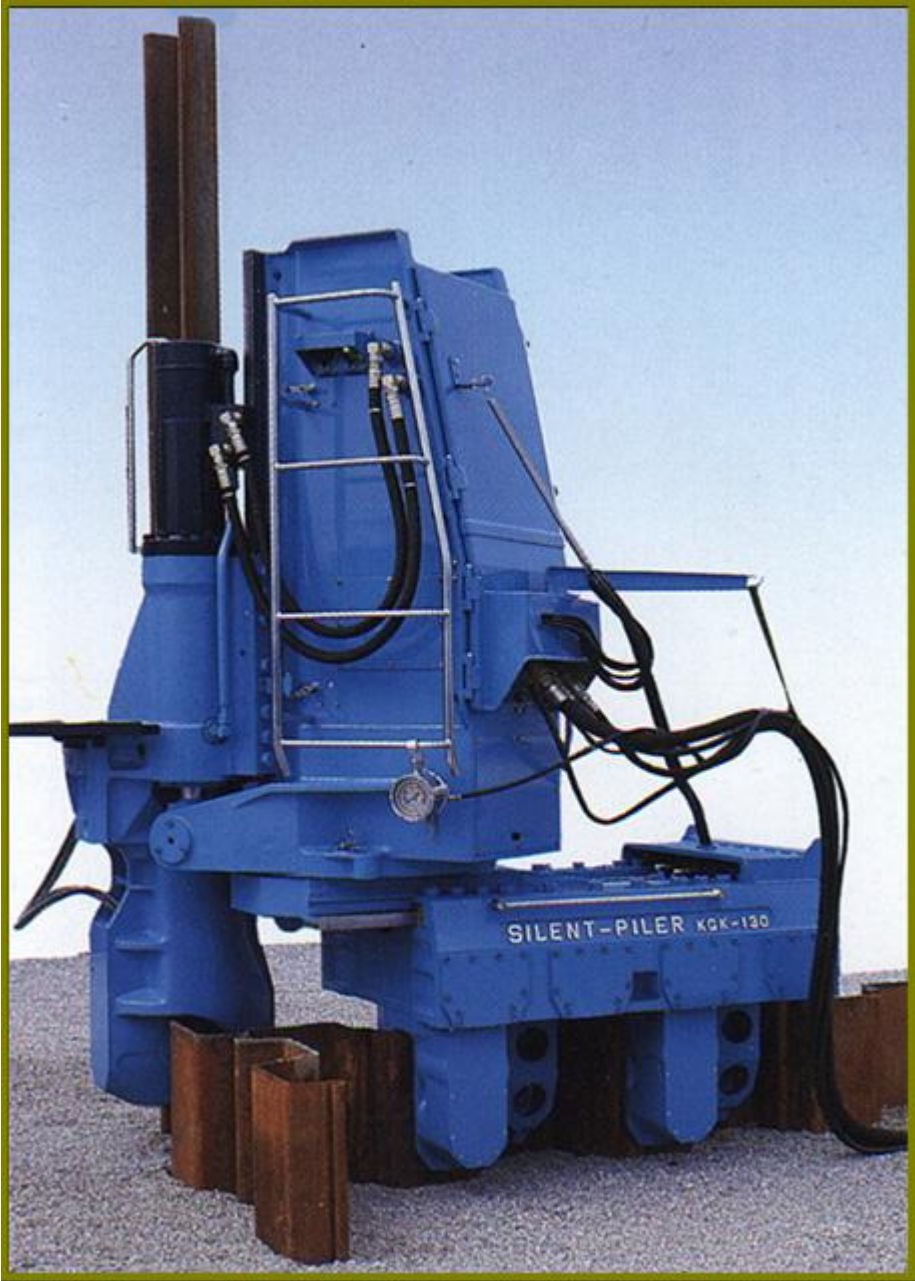




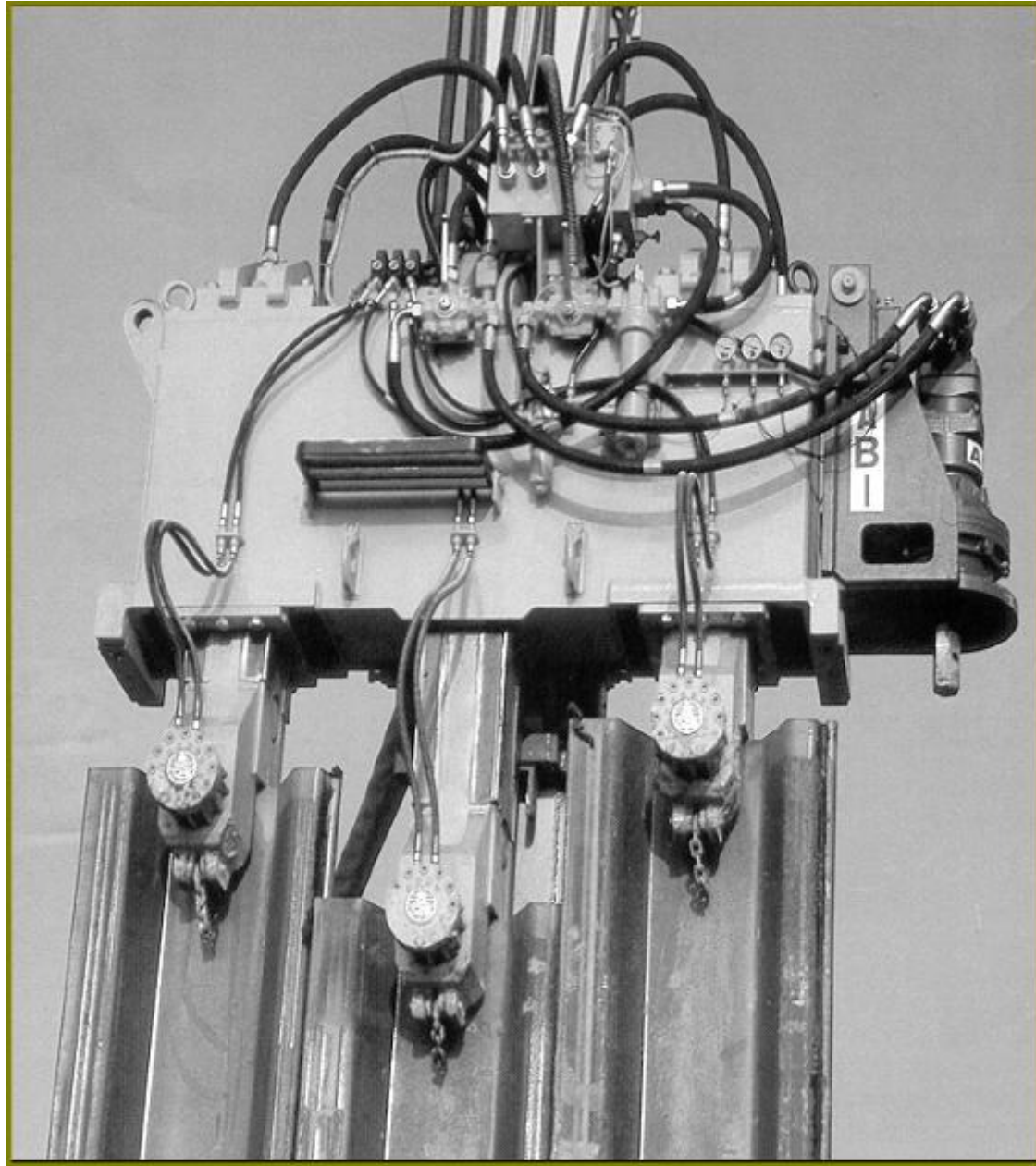


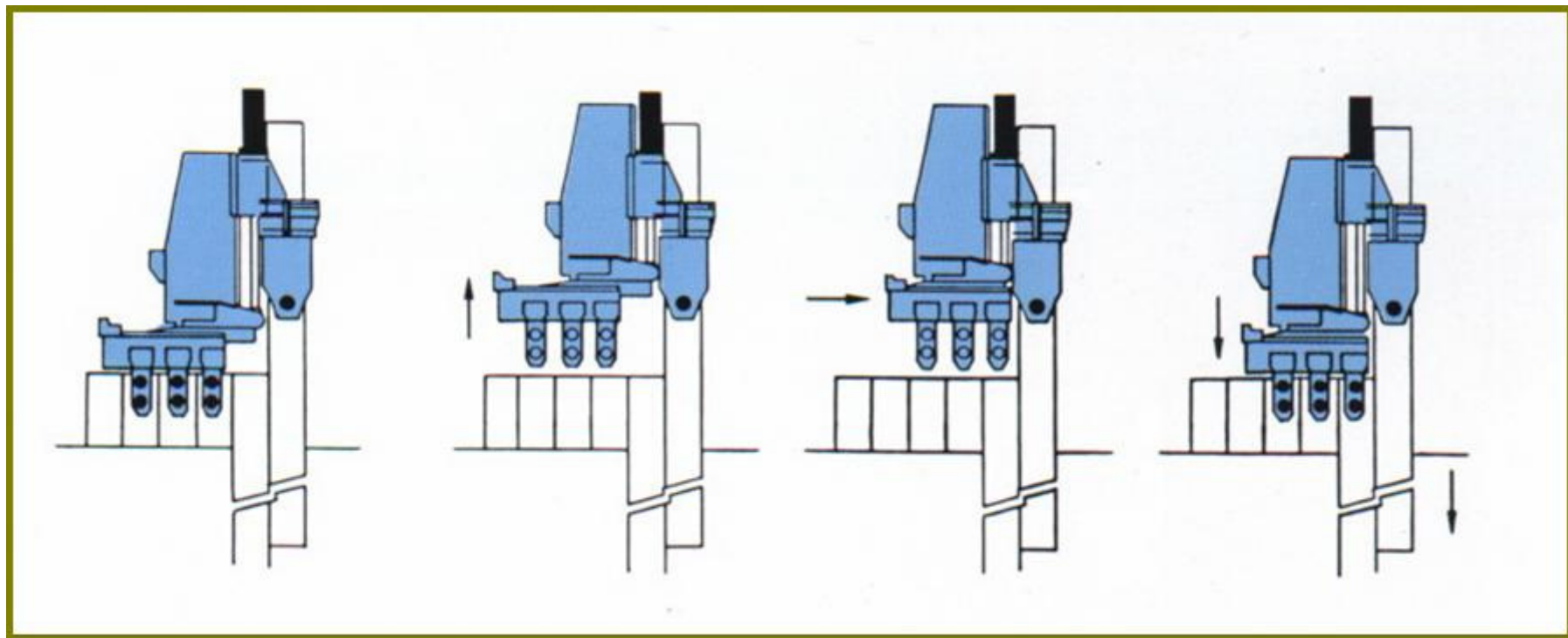


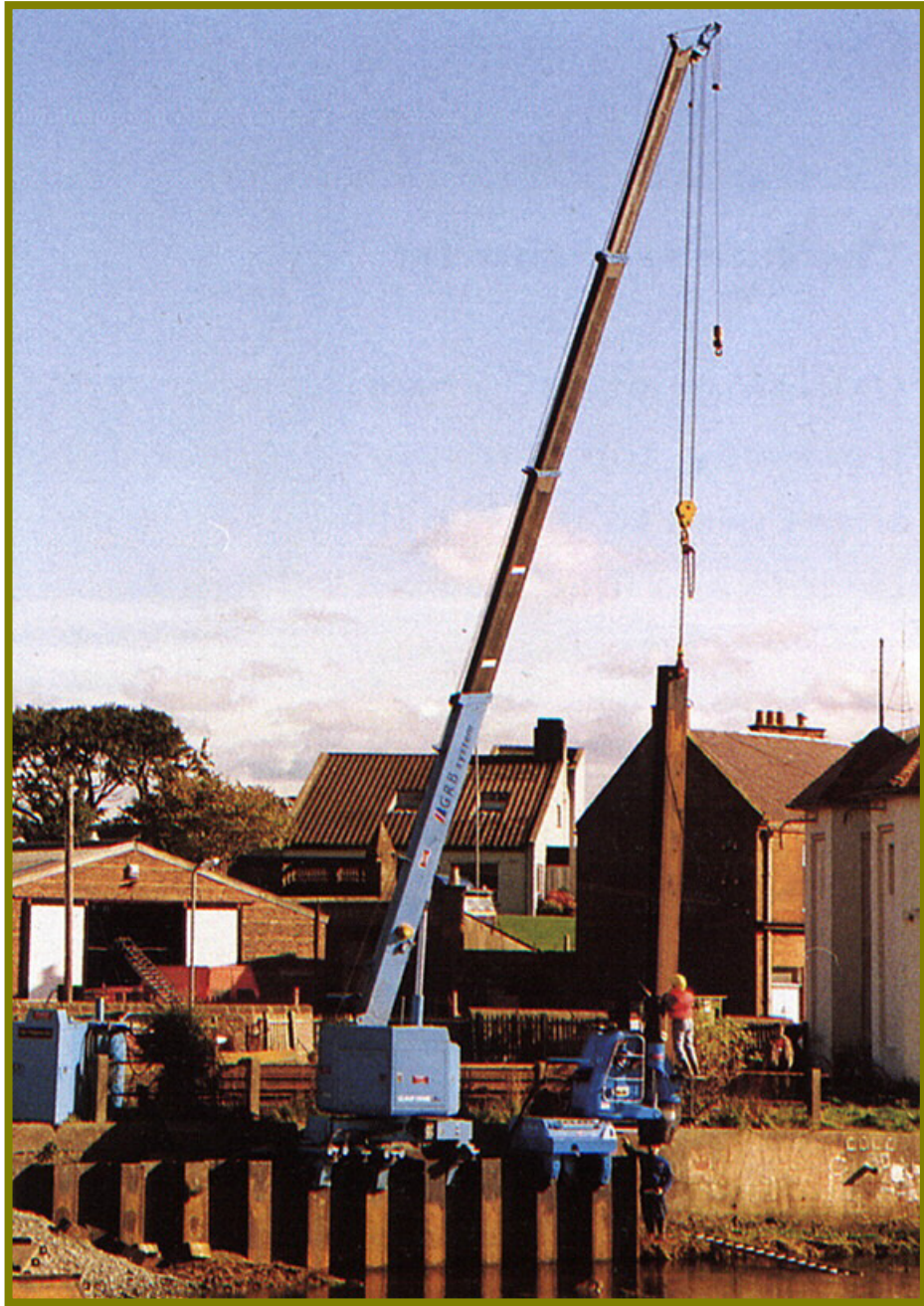












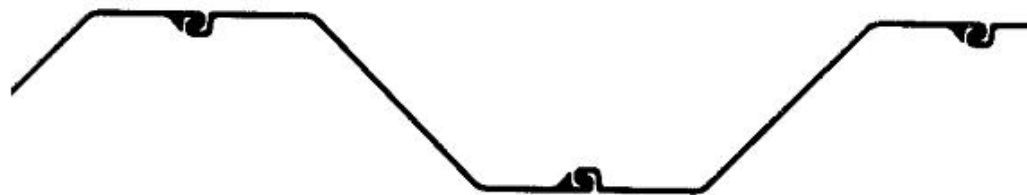


# Szádpalló típusok

# Szádpalló alaptípusok



U-hullámprofil Larssen-típus

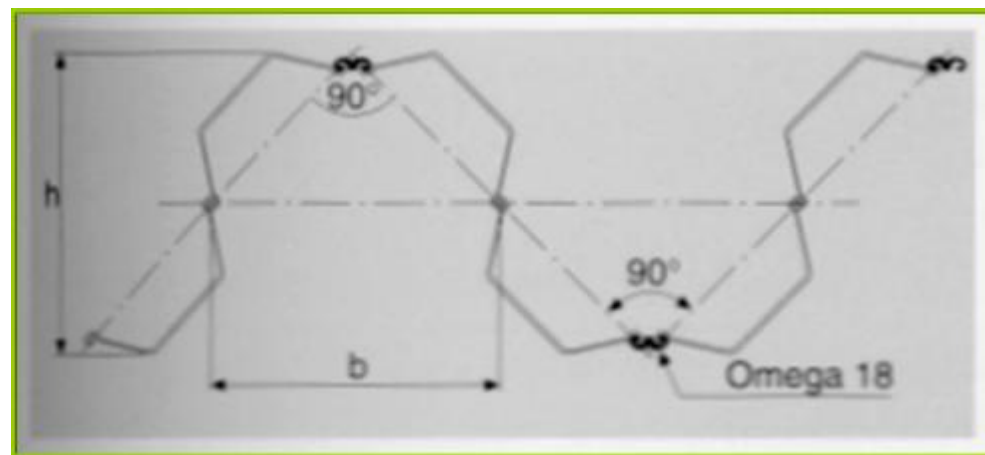


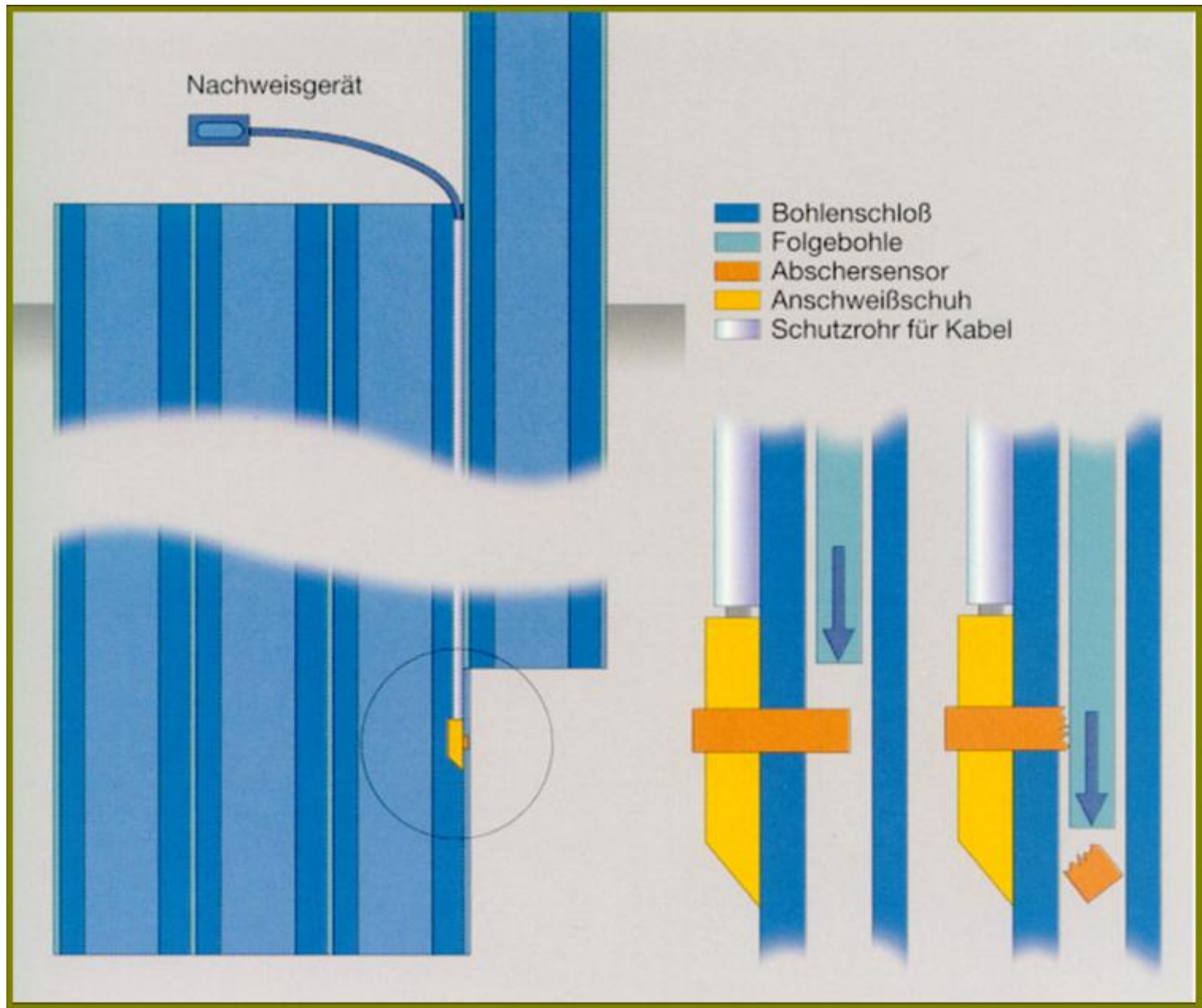
Z-hullámprofil Hoesch-típus











**Cölöpfal**

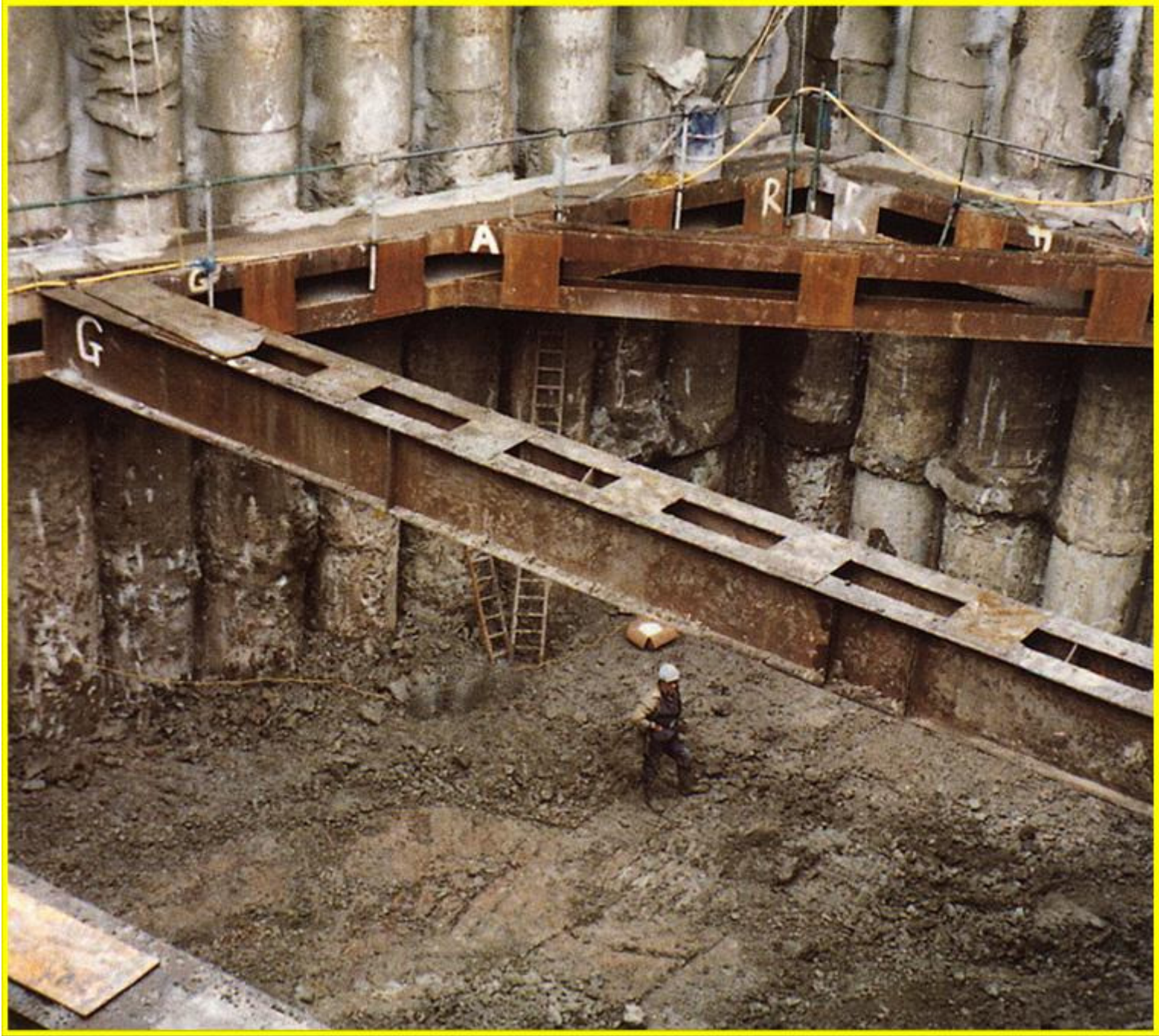




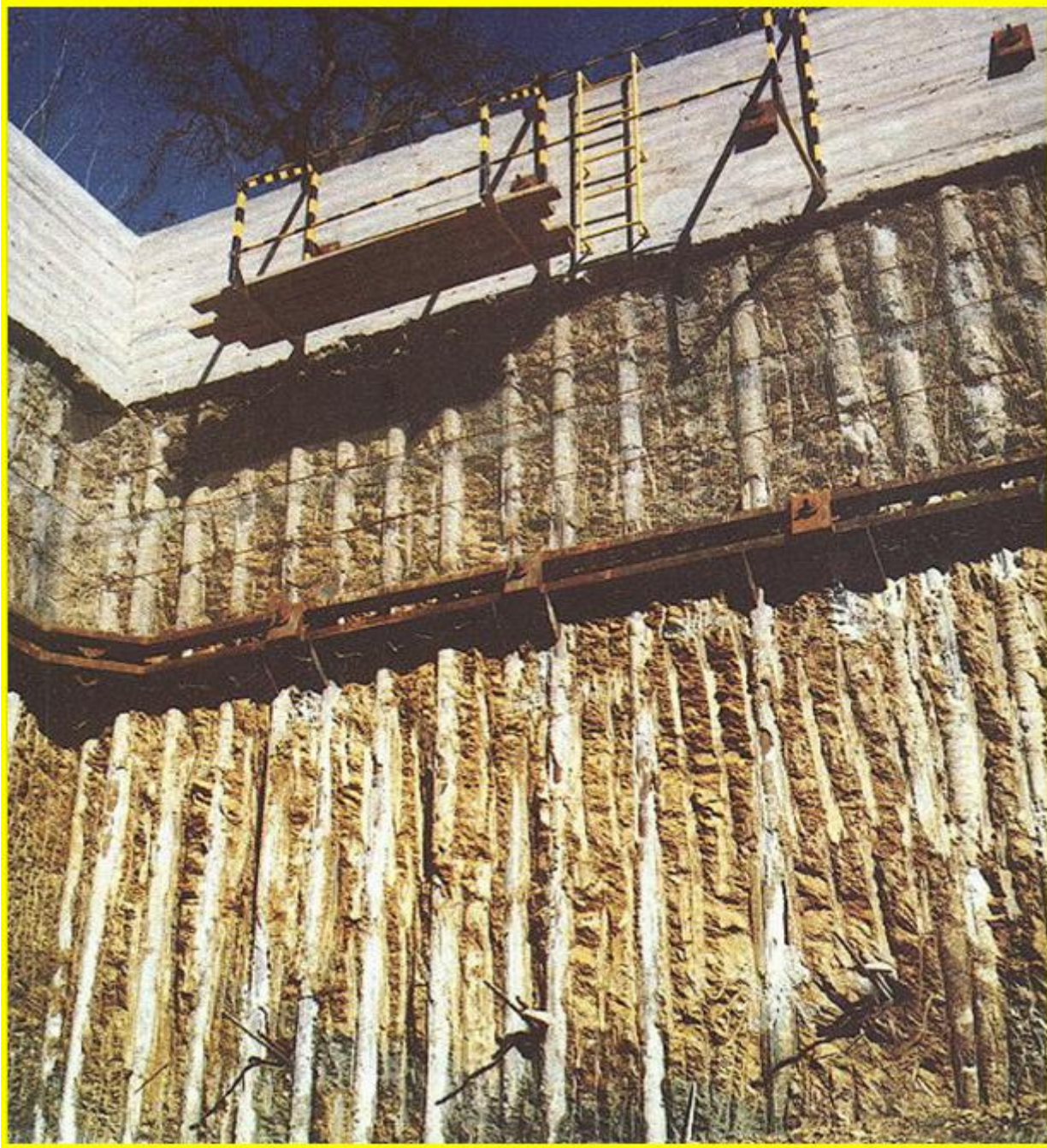




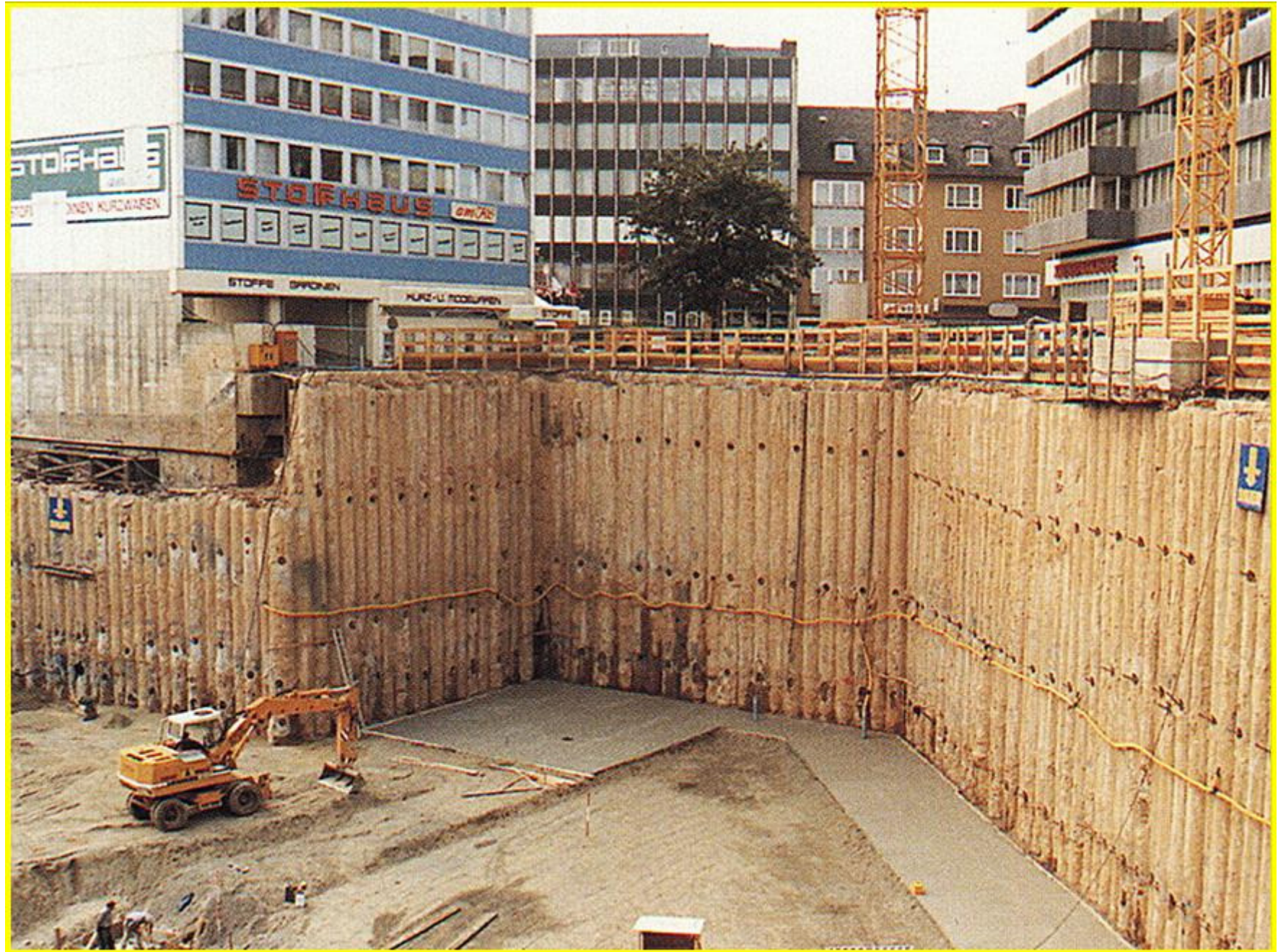




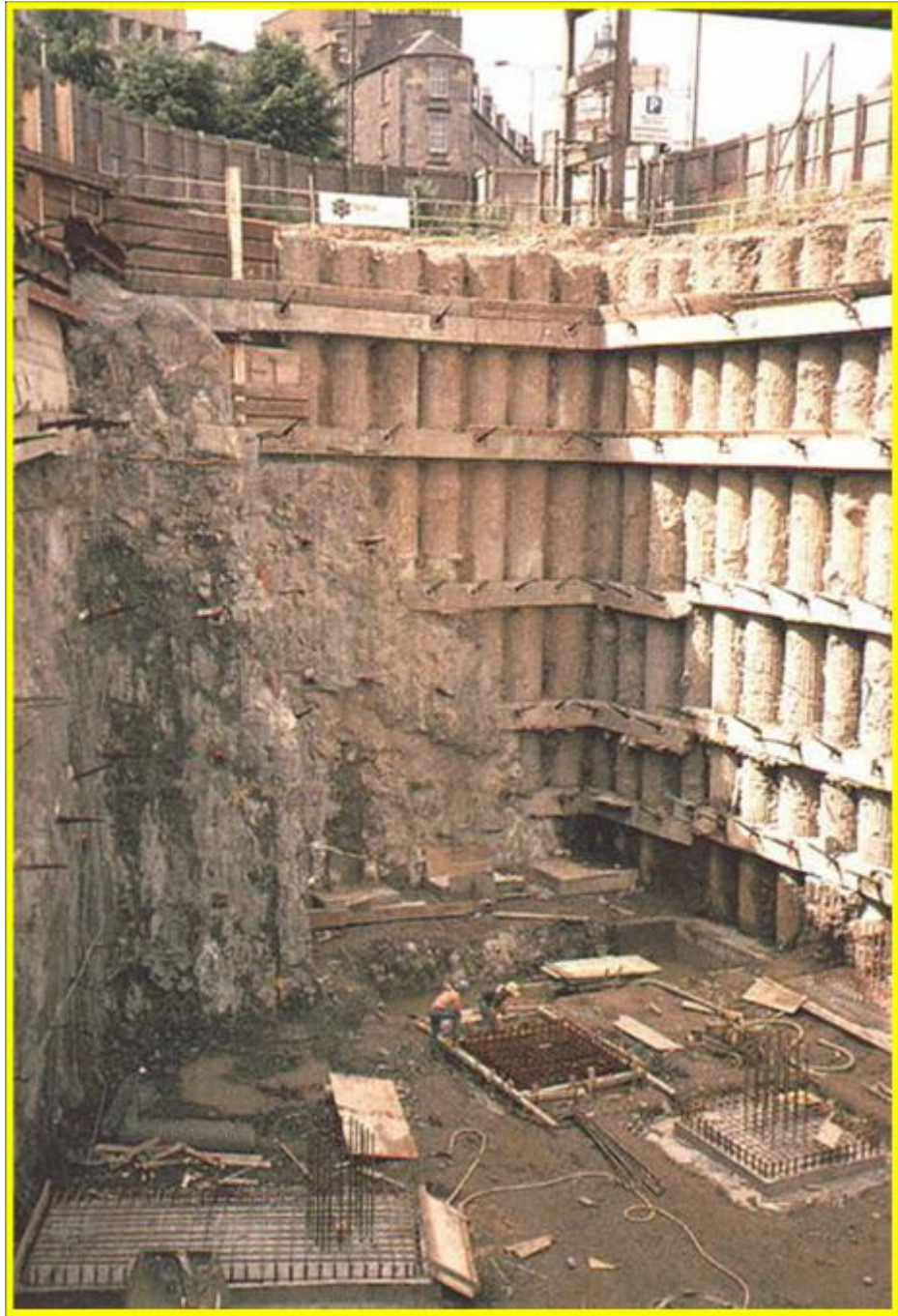










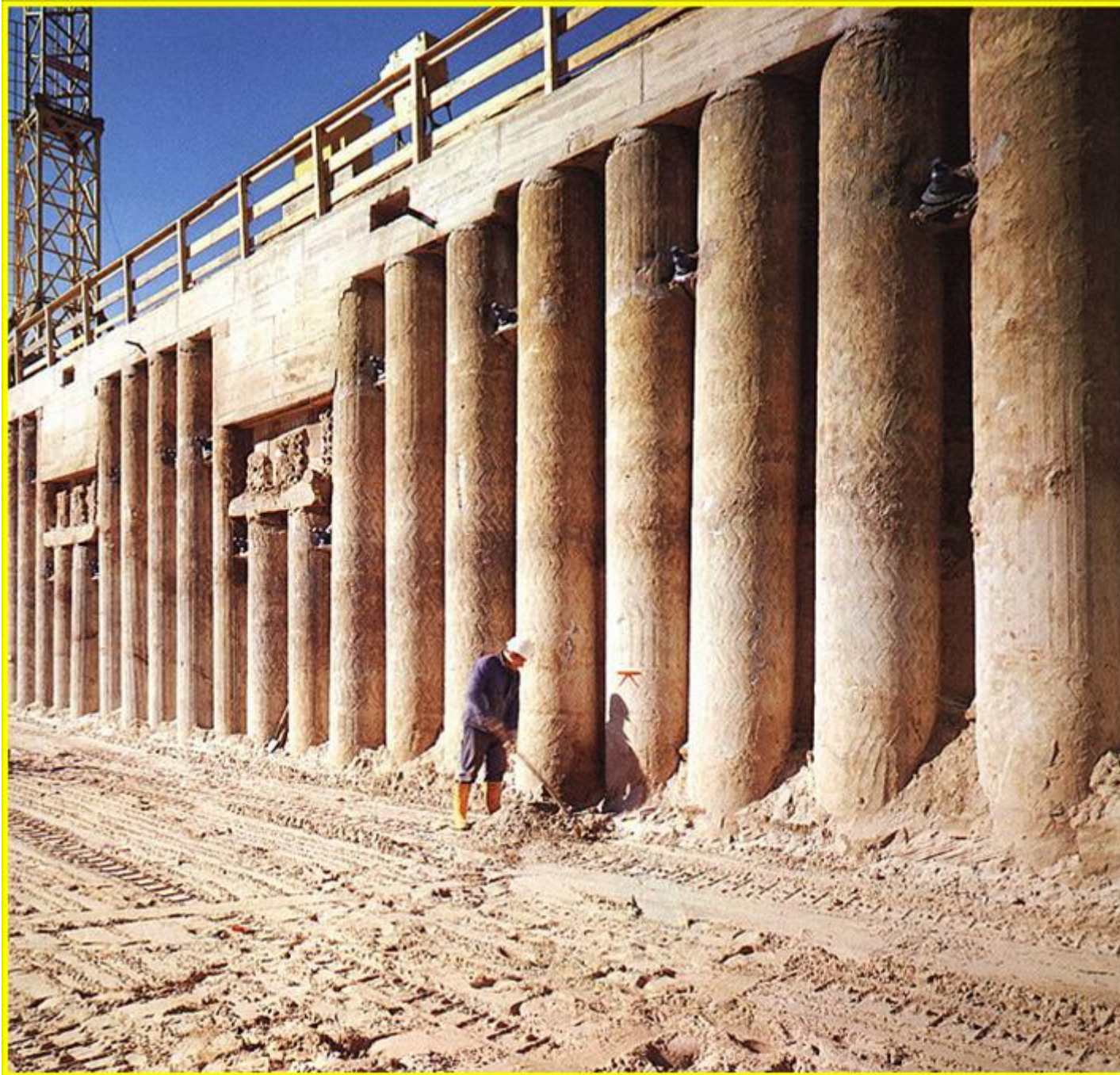




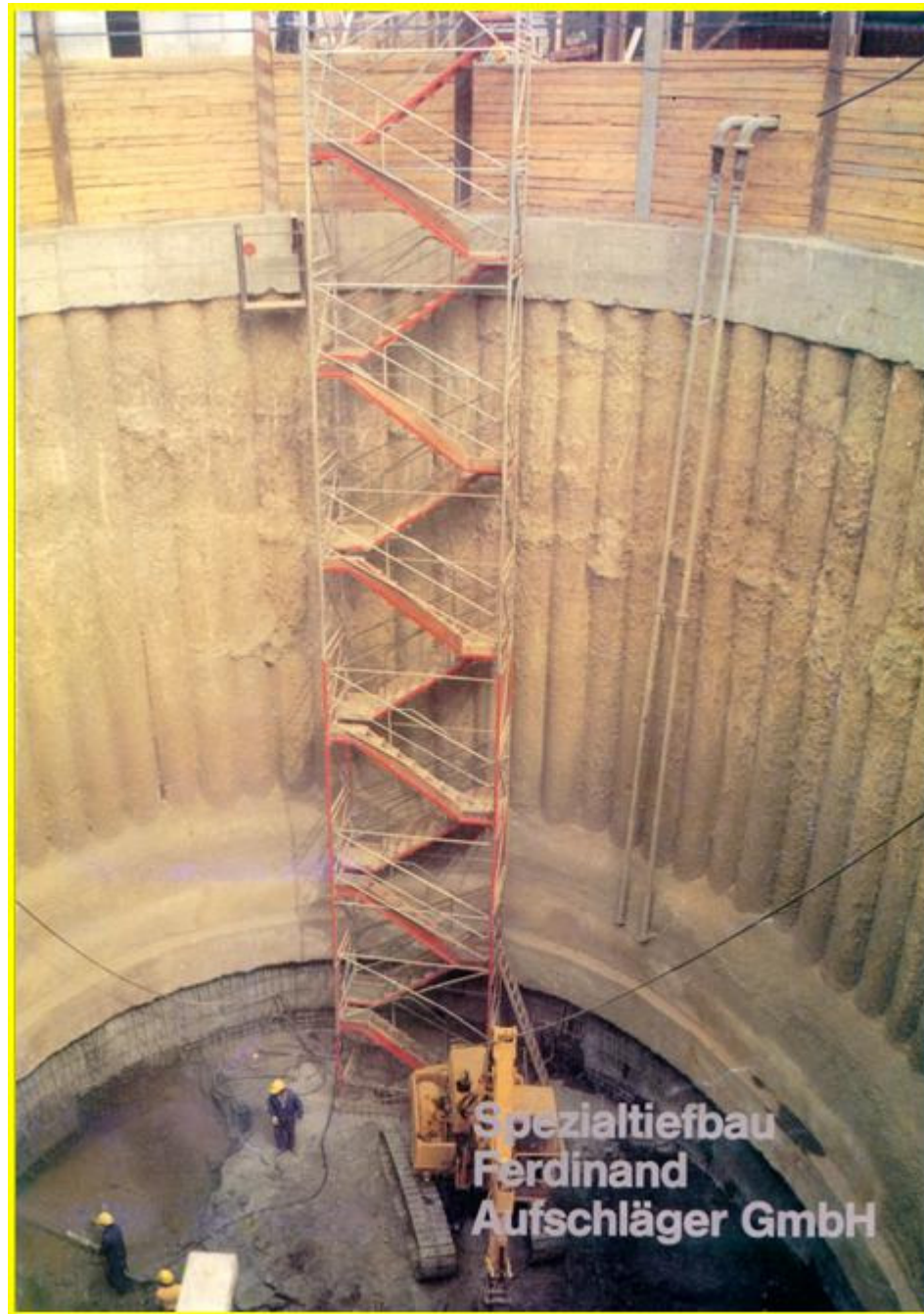












**Spezialtiefbau  
Ferdinand  
Aufschläger GmbH**





