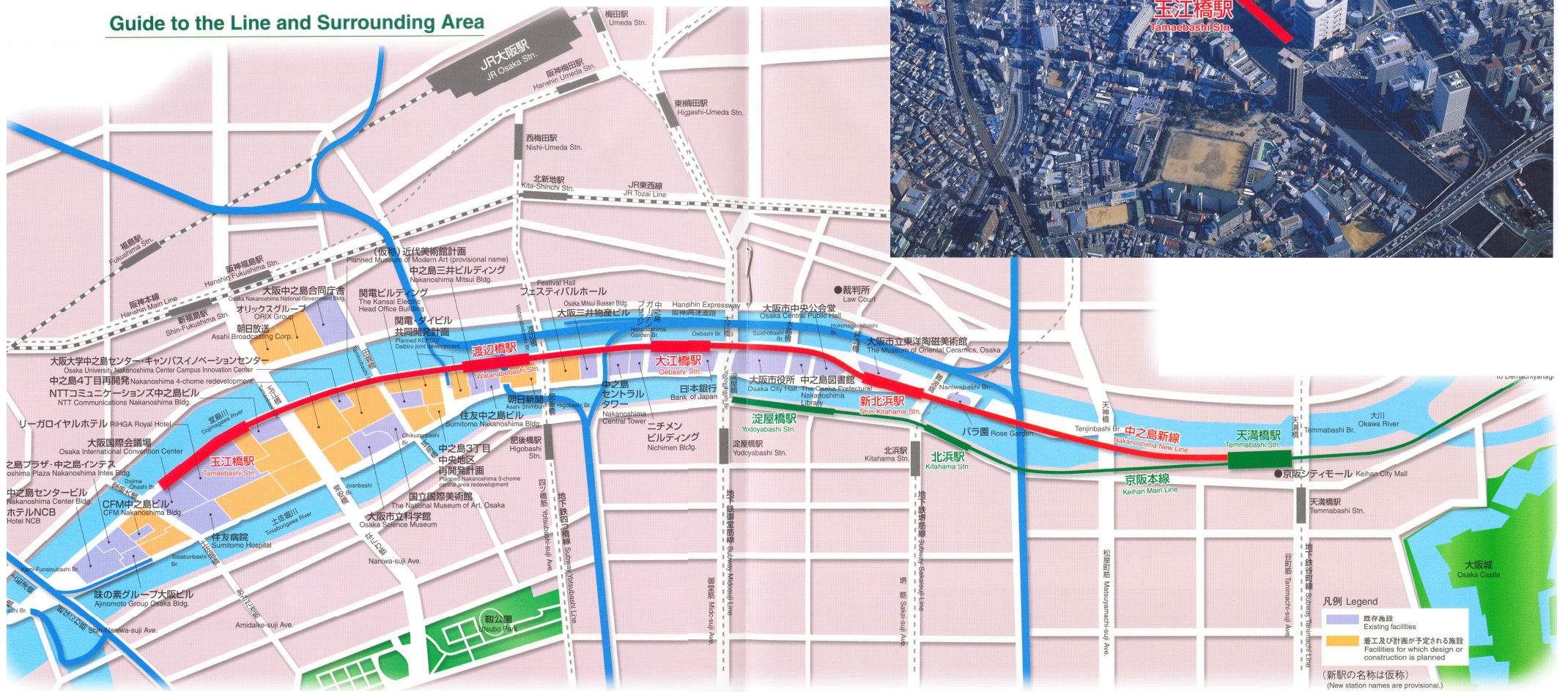


Guide to the Line and Surrounding Area





大阪駅
Osaka Stn.

大江橋駅
Oebashi Stn.

渡辺橋駅
Watanabebashi Stn.

玉江橋駅
Tamaebashi Stn.

新北浜駅
Shin-Kitahama Stn.

北浜駅

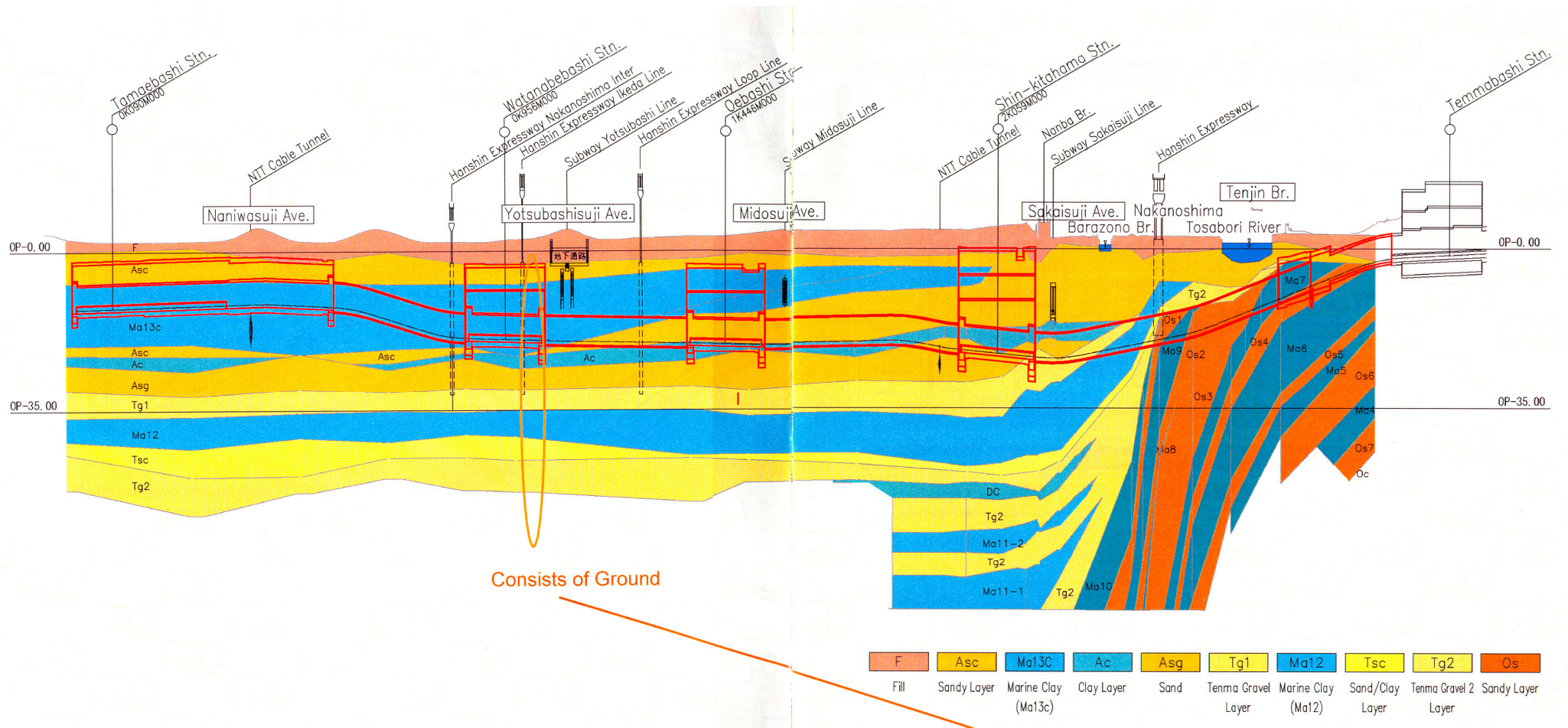
淀屋橋駅

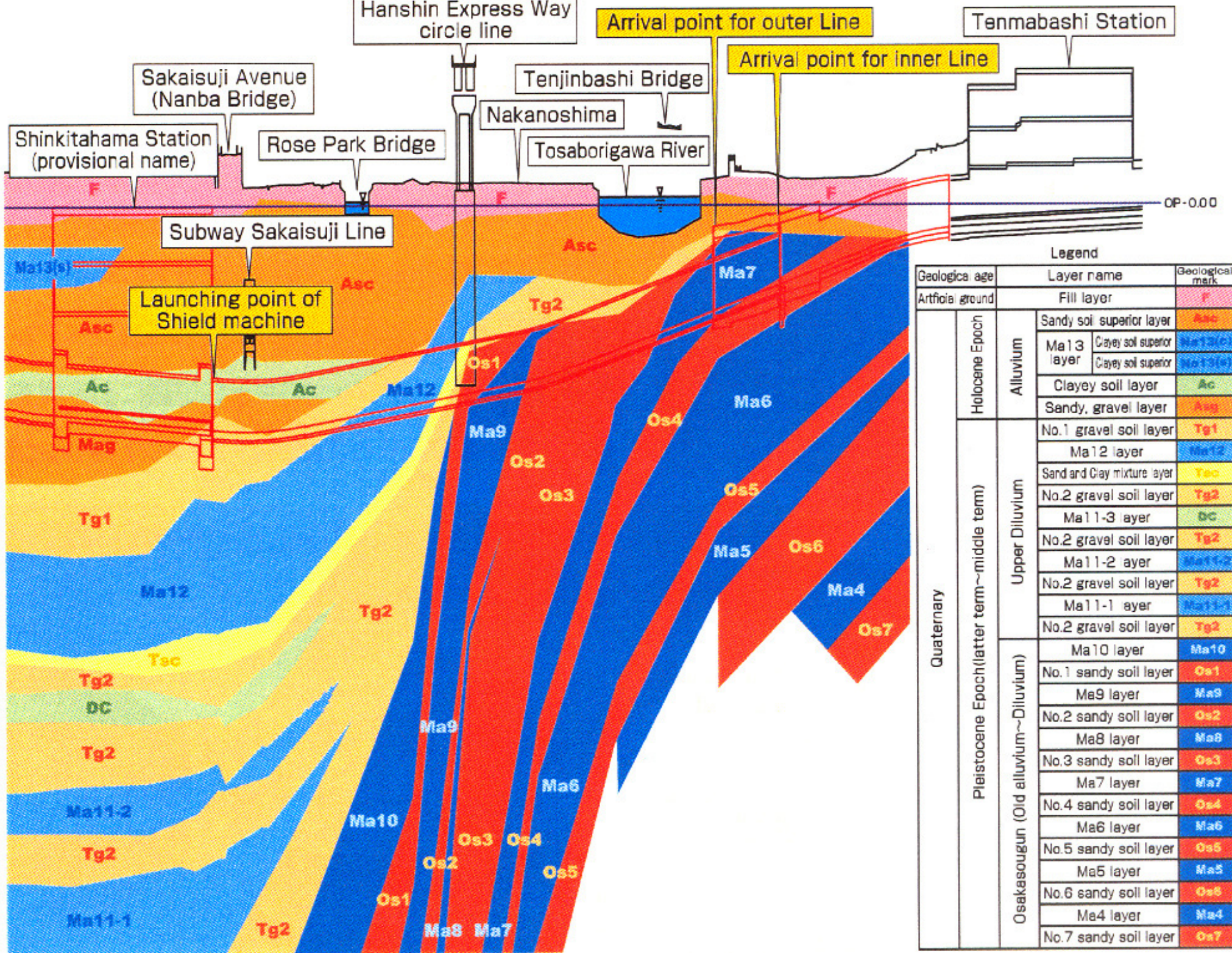
天満橋駅
Tennabashi Stn.

御堂筋
Mido-suji Ave.

京阪線

Geológiai szelvény





Legend

Geologica age	Layer name	Geological mark	
Artificial ground	Fill layer	F	
Holocene Epoch	Alluvium	Sandy soil superior layer	Asc
		Ma13 Clayey soil superior layer	Ma13(c)
		Ma13 Clayey soil superior layer	Ma13(s)
		Clayey soil layer	Ac
Quaternary	Upper Diluvium	Sandy, gravel layer	Asc
		No.1 gravel soil layer	Tg1
		Ma12 layer	Ma12
		Sand and Clay mixture layer	Tsc
		No.2 gravel soil layer	Tg2
		Ma11-3 layer	bc
		No.2 gravel soil layer	Tg2
	Osakasougun (Old alluvium~Diluvium)	Ma11-2 layer	Ma11-2
		No.2 gravel soil layer	Tg2
		Ma11-1 layer	Ma11-1
		No.2 gravel soil layer	Tg2
		Ma10 layer	Ma10
		No.1 sandy soil layer	Os1
		Ma9 layer	Ma9
No.2 sandy soil layer	Os2		
Ma8 layer	Ma8		
No.3 sandy soil layer	Os3		
Ma7 layer	Ma7		
No.4 sandy soil layer	Os4		
Ma6 layer	Ma6		
No.5 sandy soil layer	Os5		
Ma5 layer	Ma5		
No.6 sandy soil layer	Os6		
Ma4 layer	Ma4		
No.7 sandy soil layer	Os7		

N

W



Shinkitahama Station
(provisional name)

Sakaisuji Avenue
(Nanba Bridge)

Rose park
(In Nakanoshima)

Launching point of Shield machine

Nakanoshima New Line

N

nue
(e)



Hanshin Express Way circle line

Tenmabashi Station

Arrival point of shield machine

Tenjinbashi Bridge

Rose park
(In Nakanoshima)

Nakanoshima New Line

Tosaborigawa River

E

S

Plan of Change of a track

Hanshin Expressway Loop Line

Nakanoshima

Tenjinbashi Bridge

Okawa River

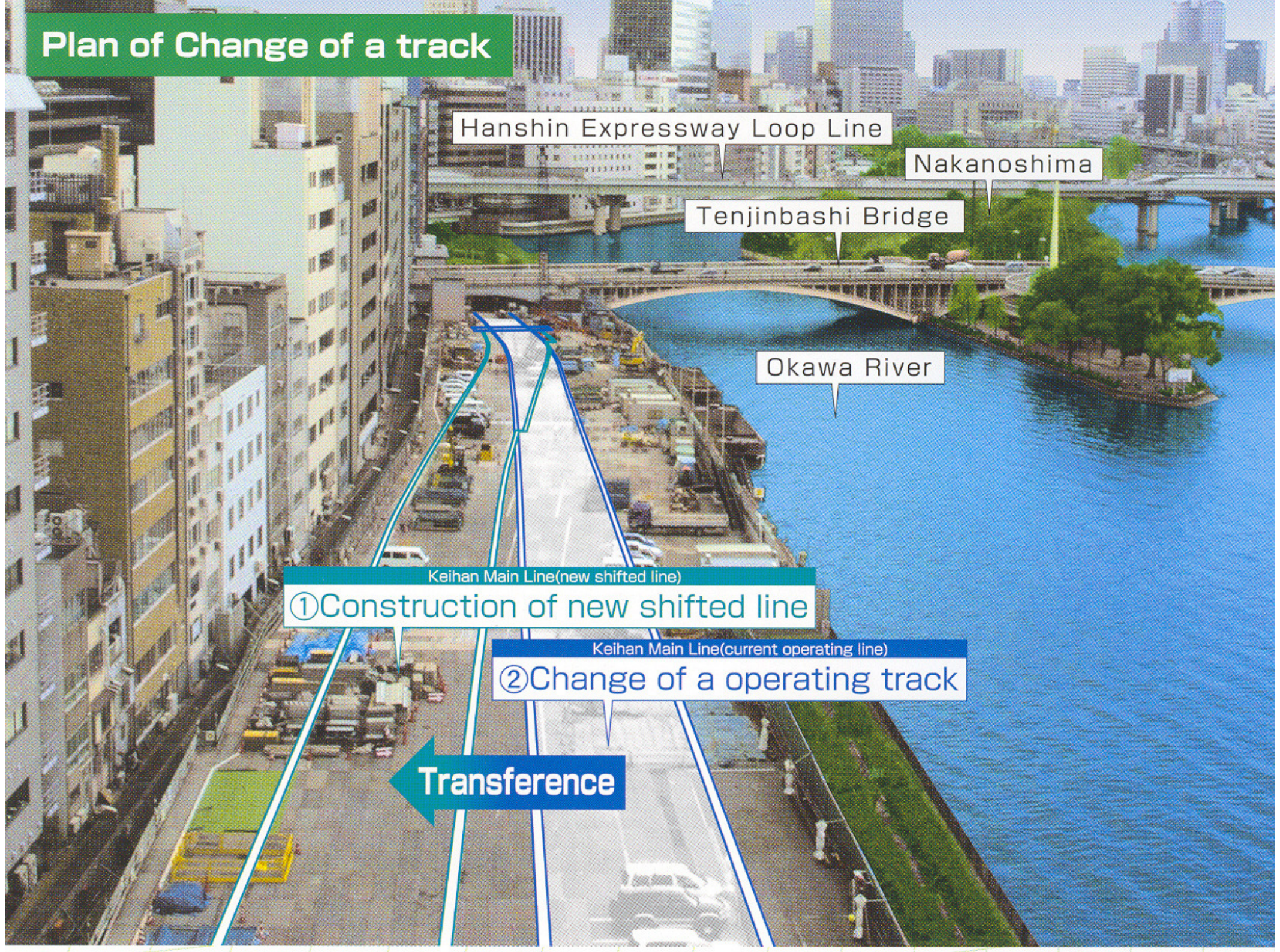
Keihan Main Line(new shifted line)

① Construction of new shifted line

Keihan Main Line(current operating line)

② Change of a operating track

← Transference



Plan of Nakanoshima New Line

Hanshin Expressway Loop Line

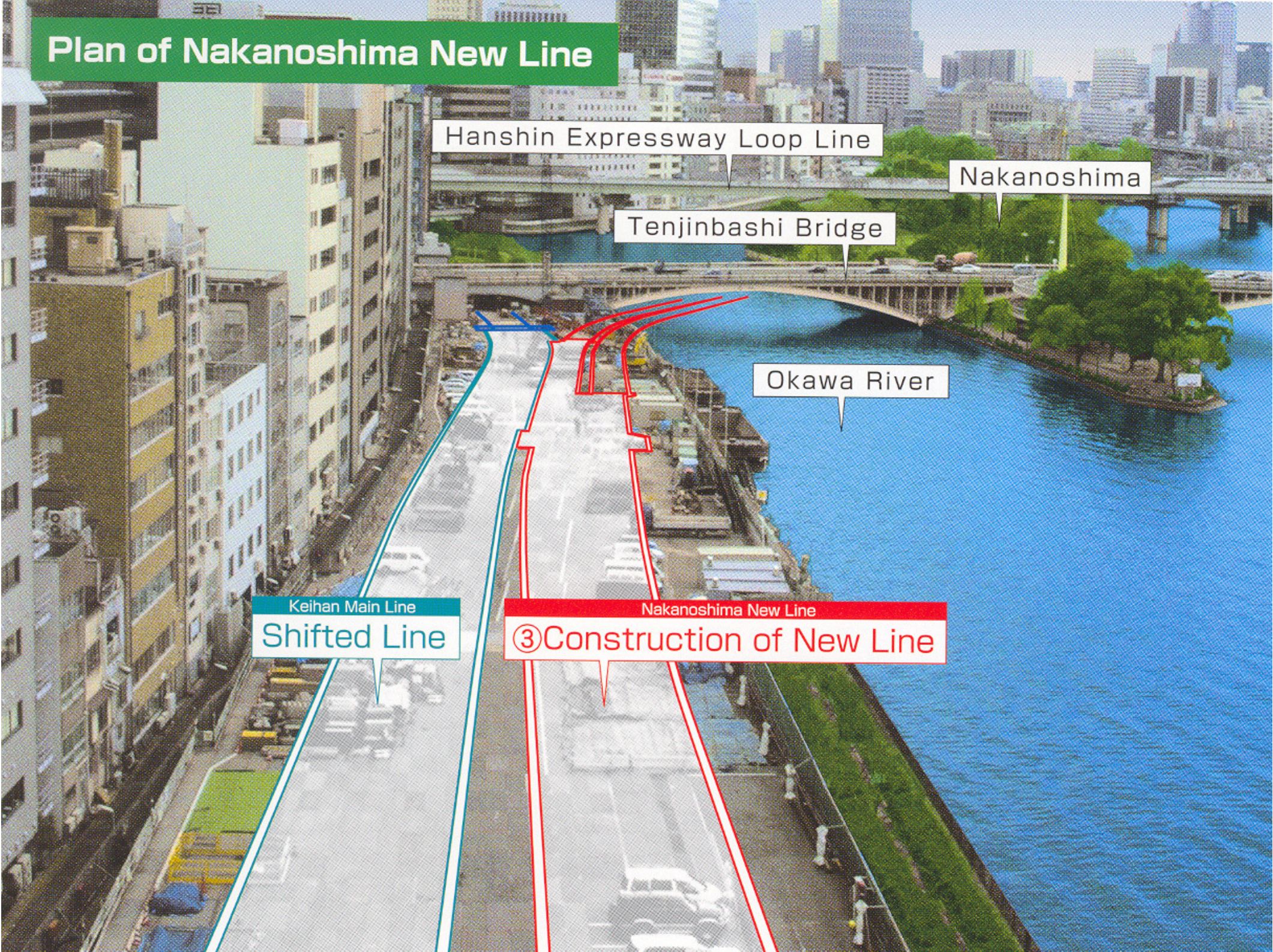
Nakanoshima

Tenjinbashi Bridge

Okawa River

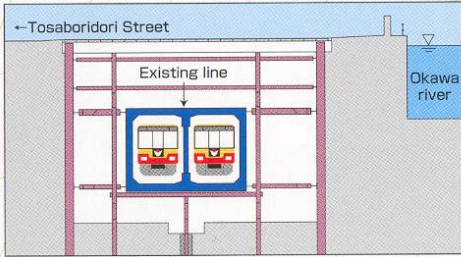
Keihan Main Line
Shifted Line

Nakanoshima New Line
③ Construction of New Line



1 Underpinning

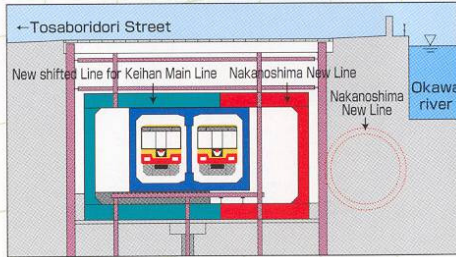
Excavation around the existing culvert supported with bearing Piles (H-Steel)



Completion in March 2005

2 Construction

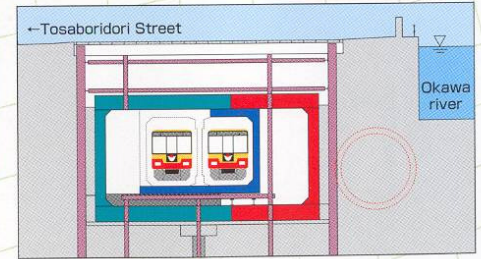
Construction of culvert for Nakanoshima New Line and shifted line of Keihan Main Line



Completion in July 2005

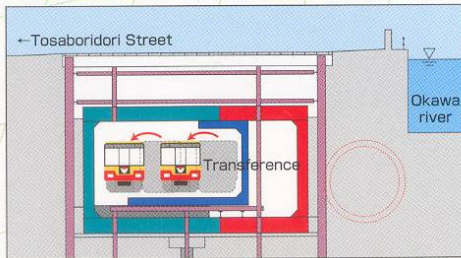
3 Removal

Removal of the Tosaboridori existing line culvert



4 Changing of a track

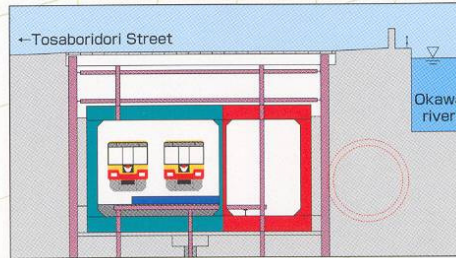
Changing existing track to new shifted track at only one night



Relocating in April 2005 (on Schedule)

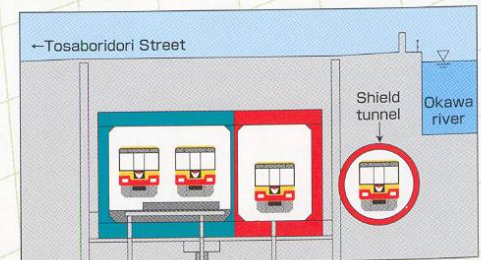
5 Removal and Construction

Construction of intermediate wall after removal of Okawa River side of existing line culvert



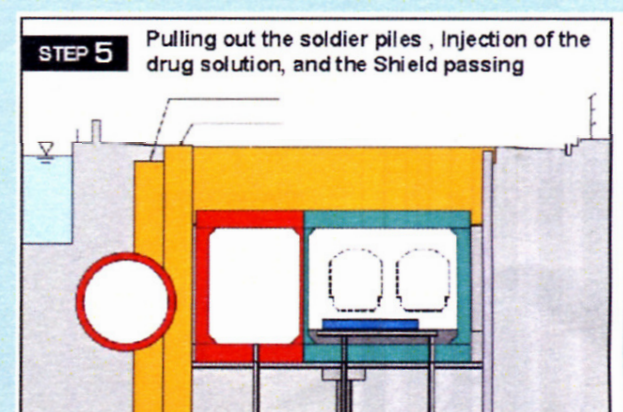
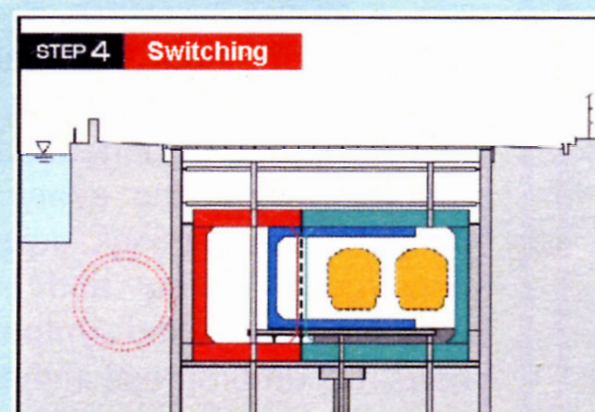
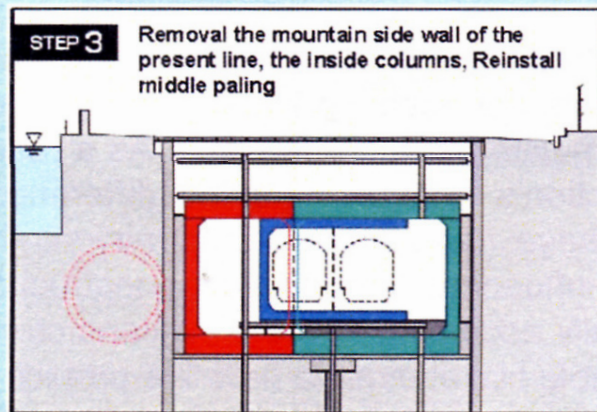
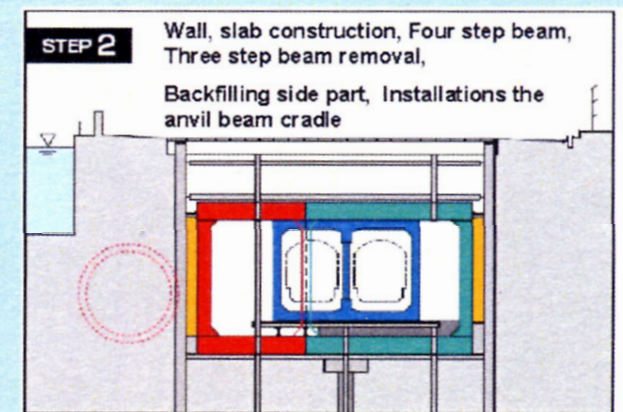
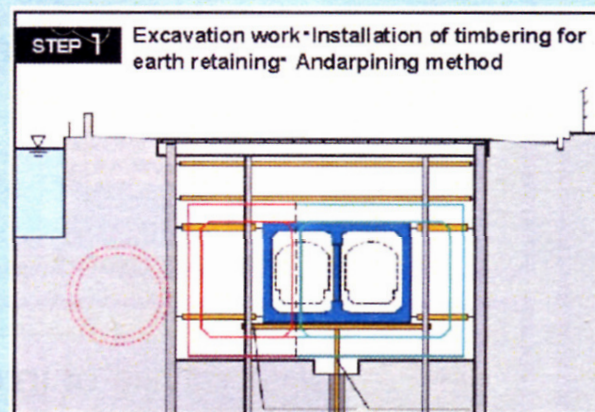
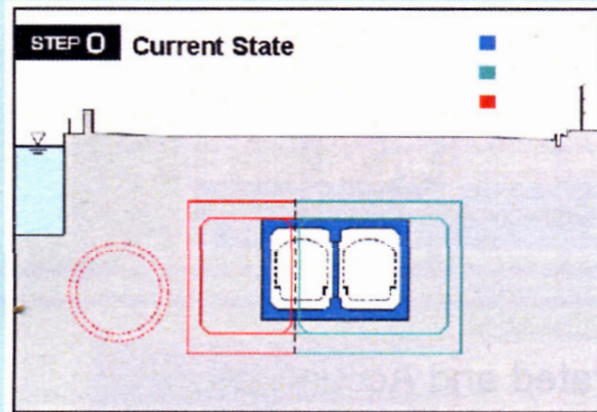
Completion in June 2005 (on Schedule)

6 Starting Operation of Nakanoshima New line



Sta
Ne
St

< Working Procedure >





Decoration With a Brick For the Temp. Revetment



Temp. Promenade



Lightning Up the Temp. Promenade



Spoil Transportation By the Hopper Barge